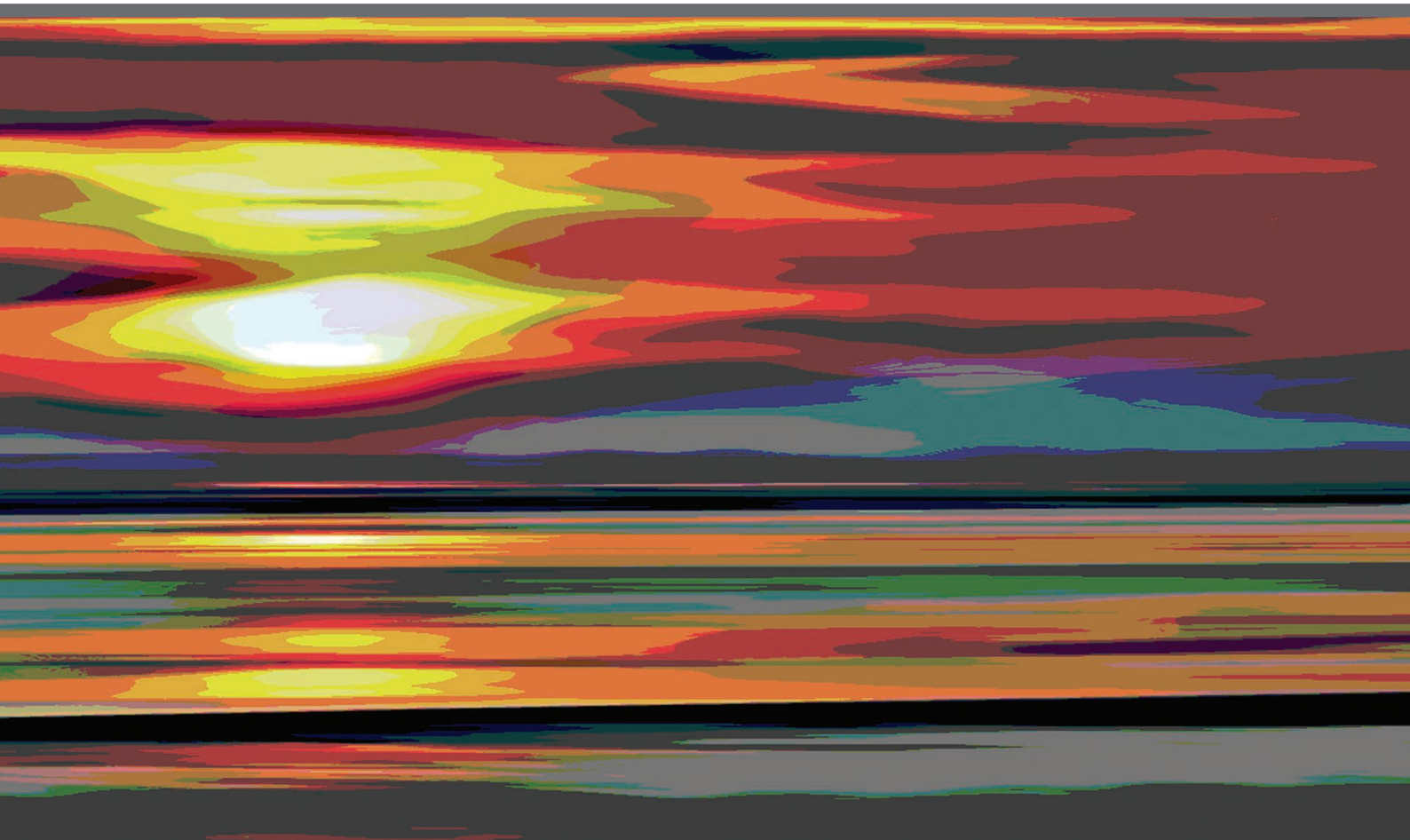


welters world™

A Government World Supplement

July - September 2025



welters world™

News and product updates from **welters®** organisation worldwide. A place to share our interesting work in agriculture with our heritage herds, historic site restoration, furniture design, stone manufacturing and much more.

welters®

ORGANISATION
WORLDWIDE

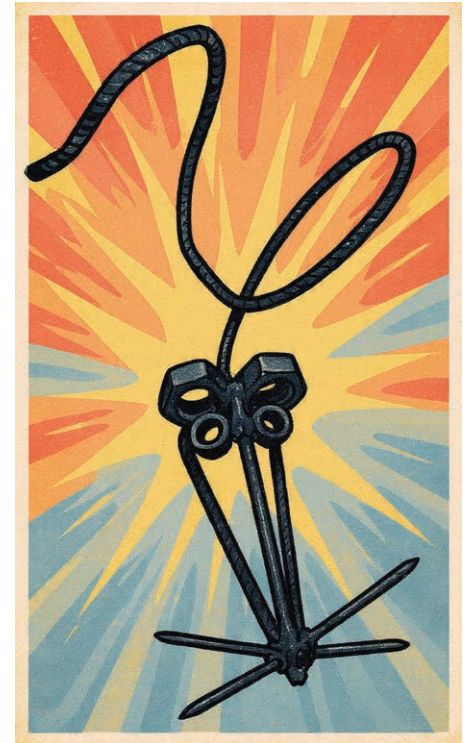
Design and Innovation



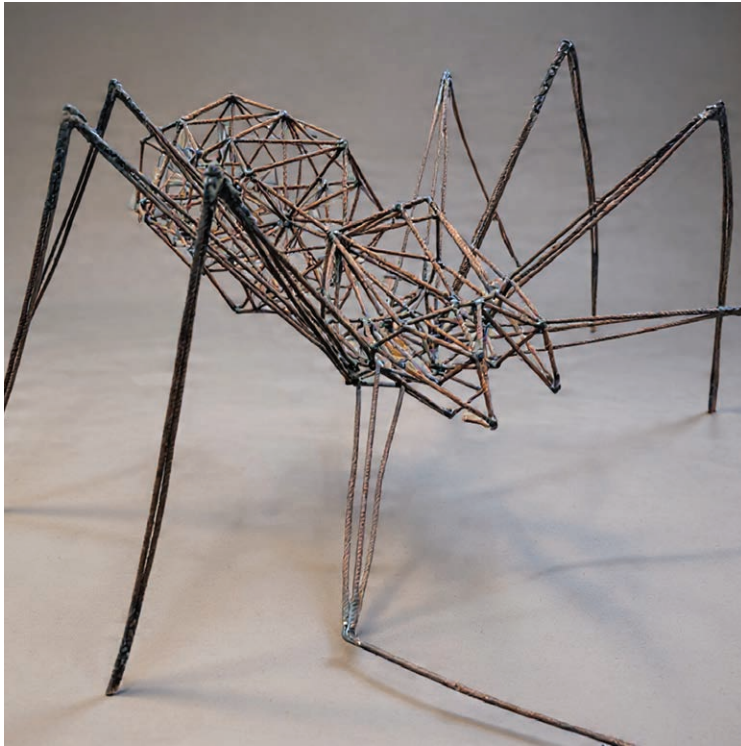
Biota Sculptures and Art

Inspired by plants, animals, fungi and all other living organisms, the Biota Sculptures merge art and technology to bring imagination to life with our intriguing creations. Some examples of these are shown on the next few pages.

Mouse



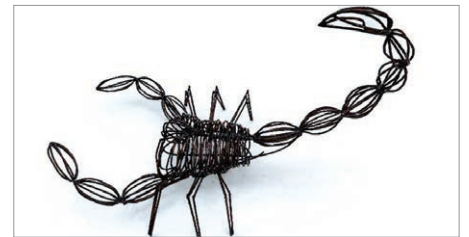
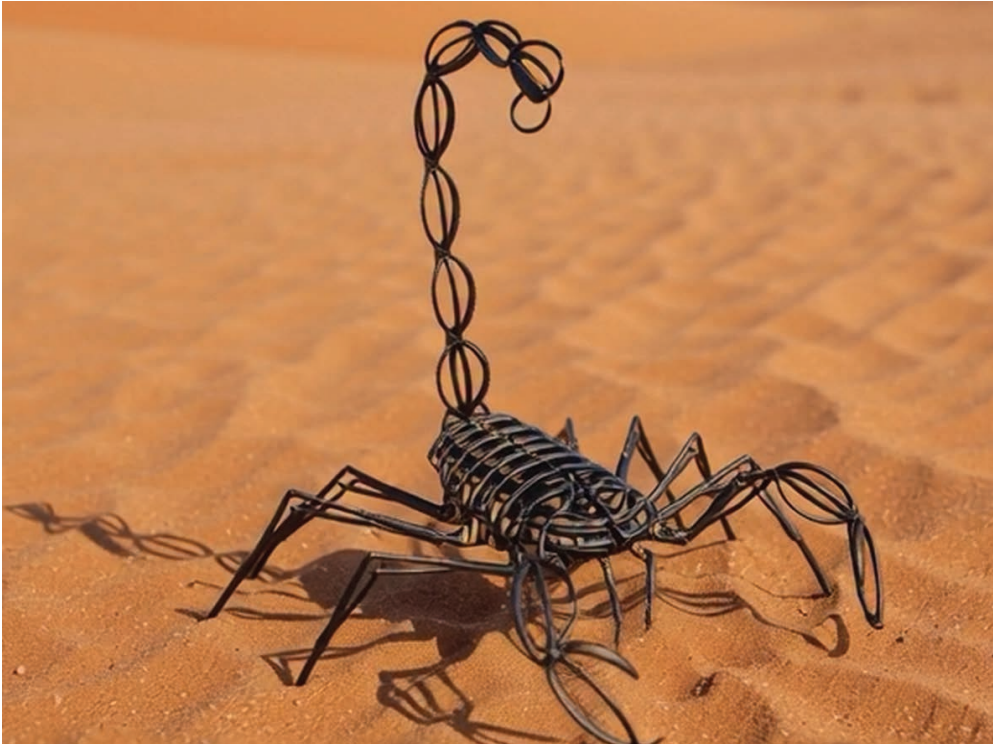
Spider



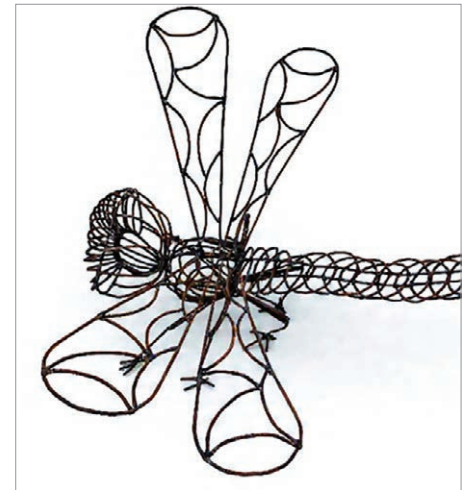
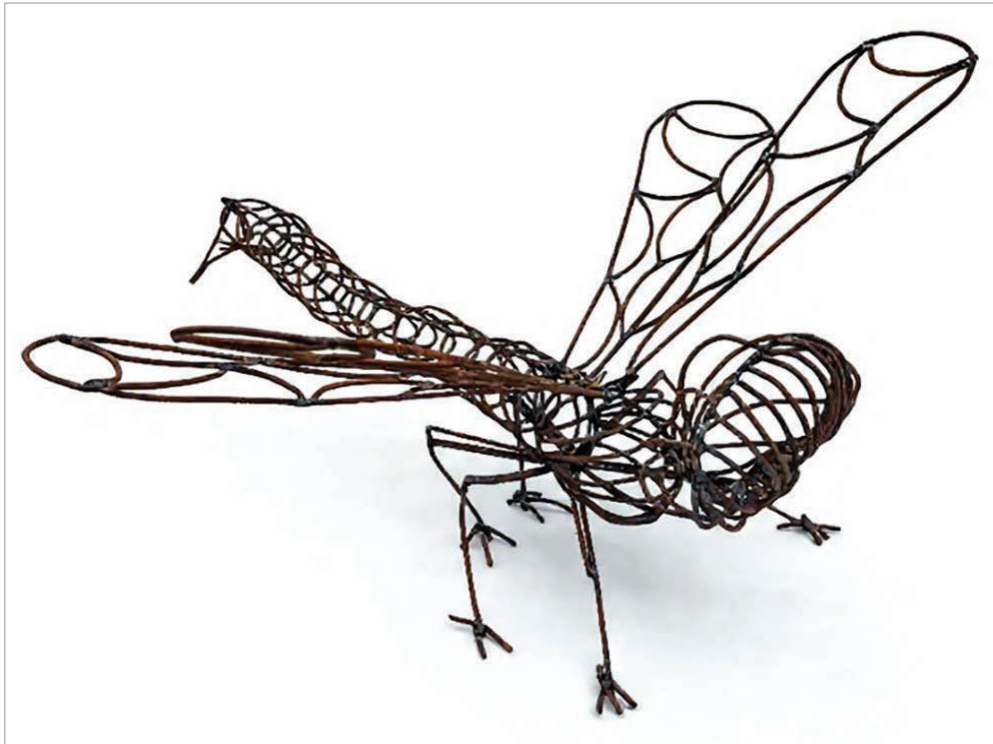
Dragon



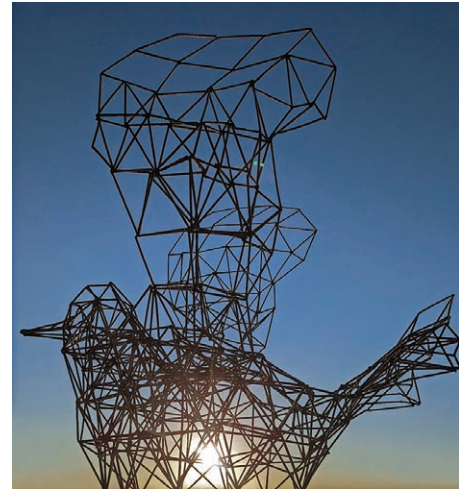
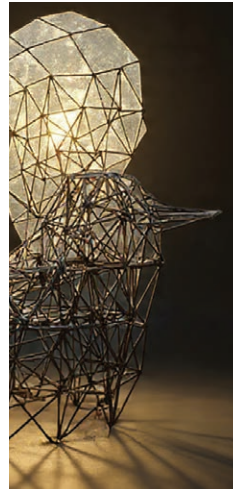
Scorpion



Dragonfly



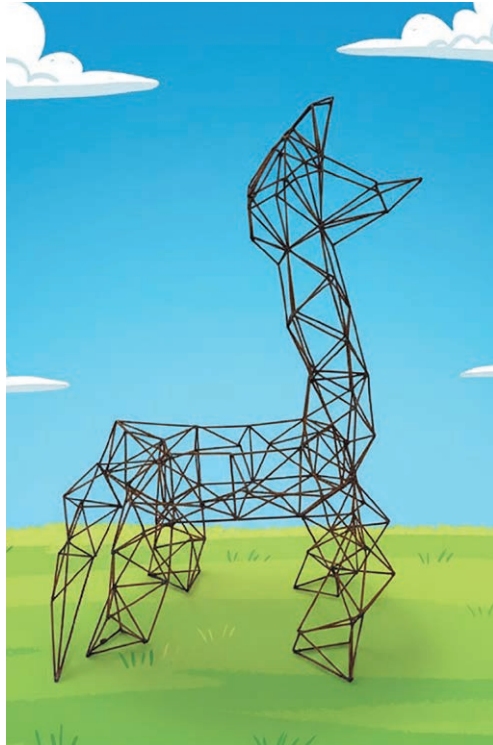
Dove



Highland Cow



Dinosaur



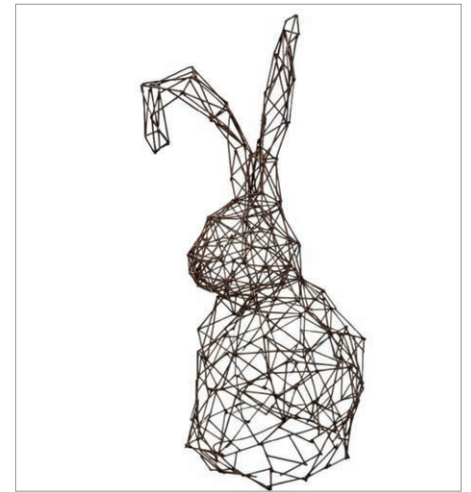
Flower



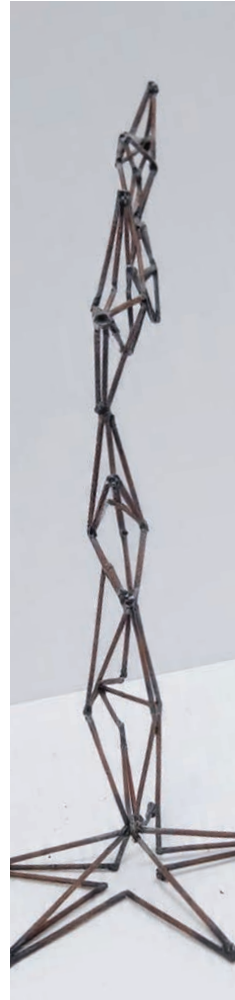
Dog



Rabbit

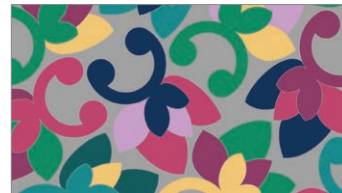


Starburst





KeithWelters



Visit KeithWelters' shop on REDBUBBLE to view and purchase designs and products (a few examples shown above). Visit www.redbubble.com/people/KeithWelters or click on the QR code above.

Native Gene Agriculture



Black Galloway - White Shorthorn - White Galloway - Blue Grey

welters®
ORGANISATION
WORLDWIDE

Manufacturers & Distributors of Environmental Cast Stone



welters®
ORGANISATION

This subtle
high impact
cast bronze
example, designed
and manufactured
by welters, was
installed in
the temperate
rainforest natural
environment.
First manufactured
in 2001.



Environmentally friendly historic border stones, designed and created by welters, in a natural temperate rainforest setting

Lush green reeds, growing in abundance at
Whithaugh amongst environmental stone boulders

welters[®]
ORGANISATION

Embracing History & the Environment

Visit us at
welters-worldwide.com

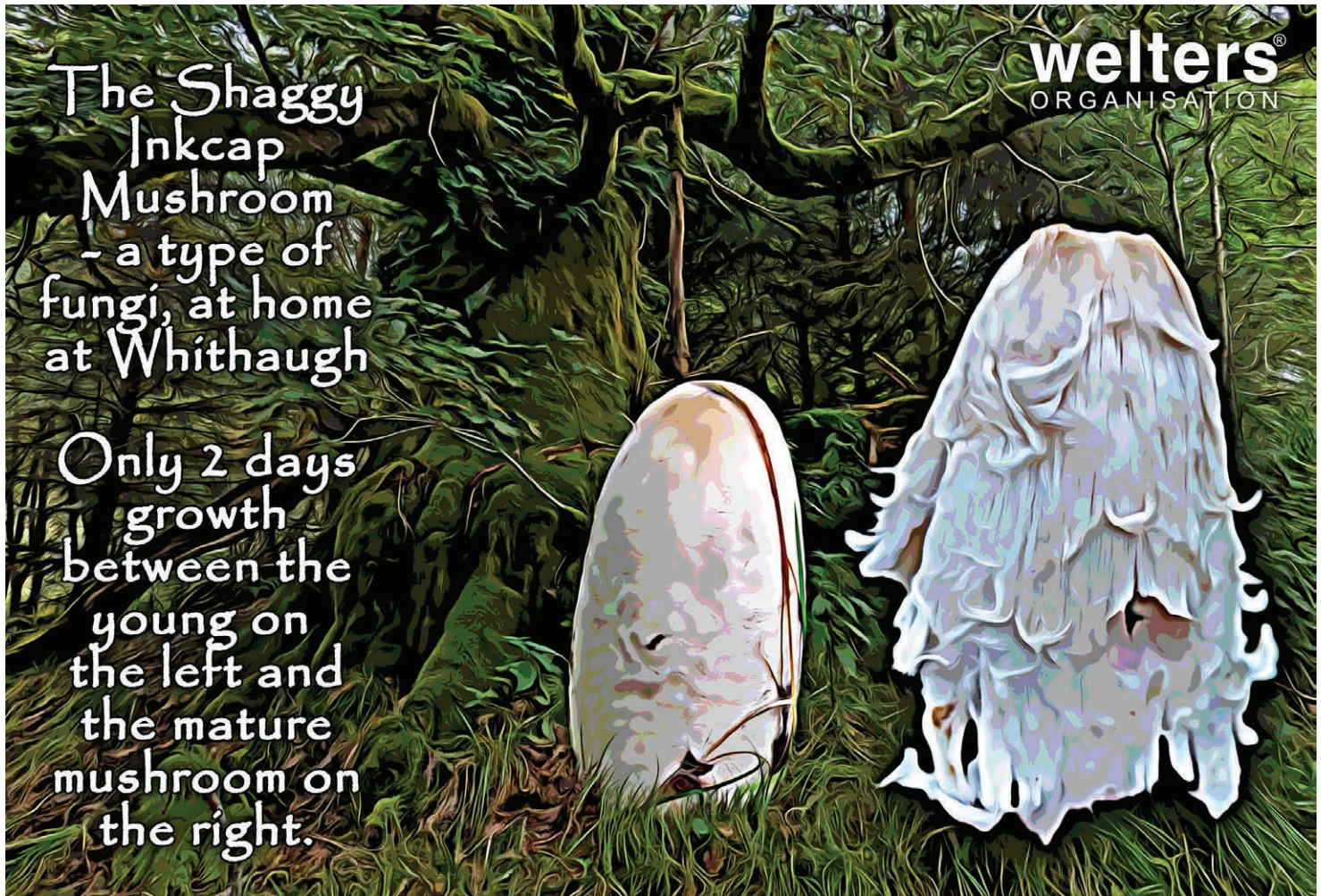
Read Government World
& Welters World magazines at
government-world.com/magazine

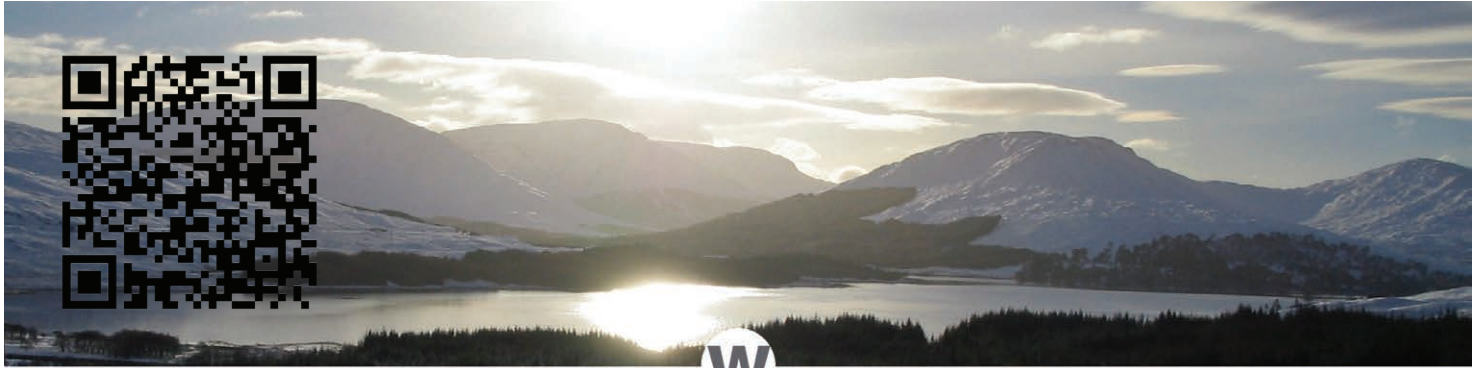
Scan here
to view
welters[®]
Synopsis 2025



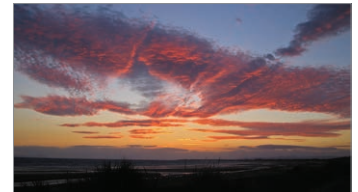
The Shaggy
Inkcap
Mushroom
- a type of
fungi, at home
at Whithaugh

Only 2 days
growth
between the
young on
the left and
the mature
mushroom on
the right.





KeithWelters



Visit Keith Walters' shop on SHUTTERSTOCK to view and purchase images (a few examples shown above). Visit www.shutterstock.com/g/Keith+Walters or click on the QR code above.

Social Media Posts

These pages show a selection of our latest social media posts. In some cases, where the original post contains a video, a screenshot has been used.



There's something so grounding about nature's vibrant, quiet growth, just like this stunning Fly Agaric.

Let the start of this week be a reminder that every day is a chance for new growth and a new opportunity.

Are you ready to put in the work!

What's one thing you're excited to focus on this week?



As we wave goodbye to British Summer Time (BST) and embrace the #darkernights, this incredible dragonfly sculpture perfectly captures the transition. A brilliant spark of light against the growing darkness.

How are you embracing the darker night this year? More reading? Movie nights? Let us know.

#ClockChange #DarkerNights #FallBack
#GMT #WinterIsComing #CozyVibes
#MoodLighting #WroughtIronArt

Did you know? Peel towers (like the one recreated here from a painting of #whithaughtower) were fortified keeps on the Scottish and English borders, built between the 14th and 17th centuries to protect families and their livestock from raids by the fierce Border Reivers. These towers are a rugged testament to a lawless and fascinating period in history. A true link to the past.

#ScottishHistory #PeelTower
#armstrongclan #BorderReiversHistory

Continuing yesterdays theme of light/dark. We are absolutely mesmerized by this incredible geometric artwork!

What animals do you see in the shapes? I'm getting reindeer vibes!!!!

#GeometricArt #AbstractSculpture
#ModernArt #OrigamiInspired
#LightAndShadow #ArtLover
#CreativeDesign #StainedGlassEffect
#VisualArt #InstaArt #ArtworkOfTheDay
#ArtInspiration #Geometry



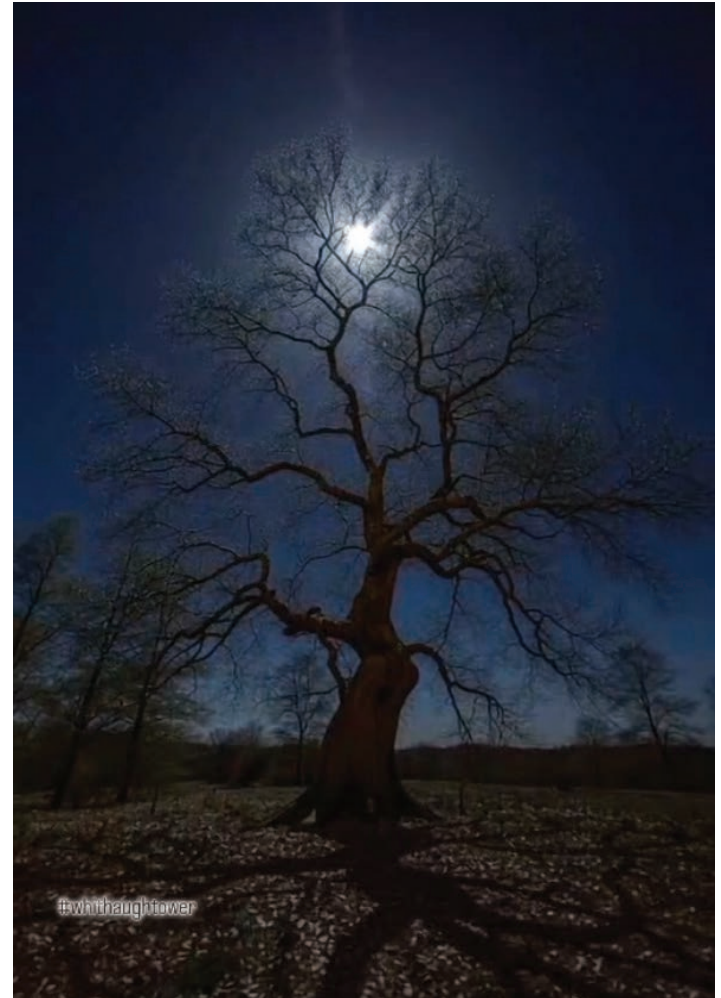
It may well be raining again... But....

Did you know that Scotland has its own rainforests? We are extremely lucky enough to have a glimpse of the is rare and vital #habitat, covered in incredible #mosses, #fungi and #lichens , right in our own back yard at #whithaughtower... Protecting these #wildplaces is so important! #WildScotland #Conservation #nature #CaledonianForest #armstrongs #nature #climatechange

Tonight we have another #fullmoon. The #BeaverMoon!

This #supermoon takes its name from the time of year when beavers would be actively preparing for winter.

Perhaps we should all be doing the same!! #welthers #nature #oldtree #moonlight #winteriscoming #lunar





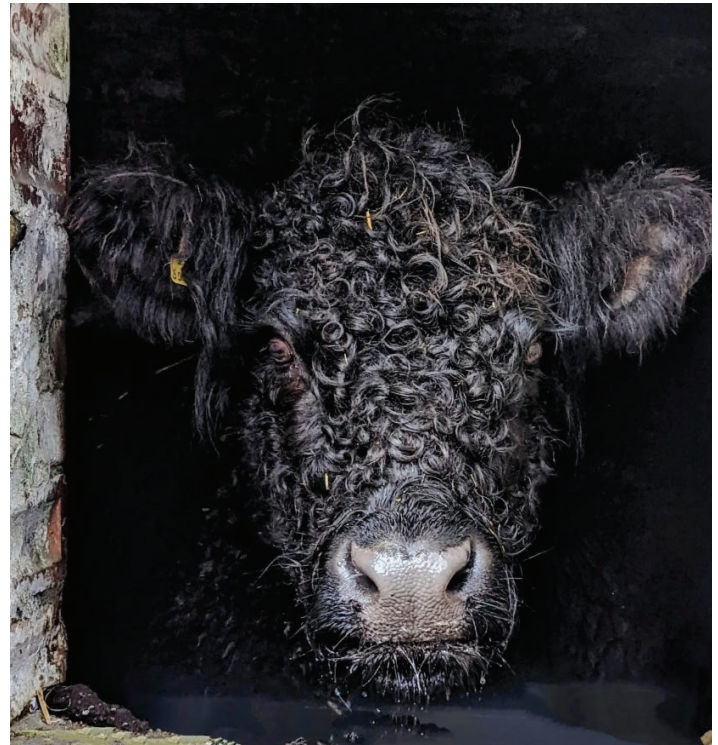
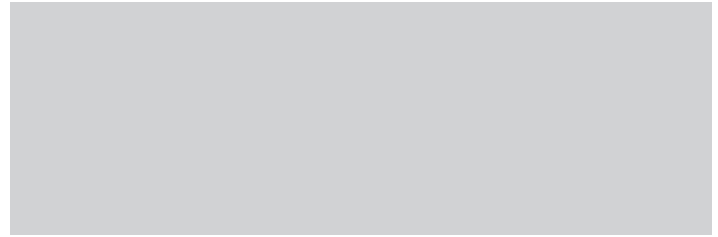
A traditional #scottishborders #drystonewall. No mortar, just skill, patience and a huge amount of #hardwork These historic walls at #whithaughtower covered in vibrant #moss and a scatter of #autumnleaves make a beautiful blend of human history and #naturalbeauty.

#StoneMasonry #NatureAndArt #AutumnVibes #scottish #scotland #MossMagic #nature #madeinbritain #historicscotland #borderreivers #debateablelands

No looking back! It's a brand new week and a fresh start.

This beautiful #BlackGalloway cow, captured waiting this morning at #WhithaughTower, looks absolutely ready to tackle Monday.

Sending you all serious positive vibes for the day! #MondayMotivation #PositiveVibes #NewWeekNewGoals #FreshStart #CowsofInstagram #GoodEnergy #ReadyForIt #MondayMood #welers





#HermitageCastle stands silently in the #ScottishBorders, witness to centuries of turbulence this fortress was Constructed around 1240 by Nicholas de Soulis specifically to control the lawless #armstrongclan of #whithaughtower and #mangertontower.

These stone walls could tell the most incredible tales.

#CastleGram #AncientHistory #ScotlandIsCalling #VisitScotland #MedievalHistory #ScottishCastles #HistoryLover #armstrong #welers



The Milnholm Cross is a historic monument located near #Newcastleton in the #ScottishBorders, and it's steeped in history. This ancient cross was erected around 1300 to commemorate Alexander #Armstrong, the 2nd Laird of #Mangerton, who was brutally murdered by William De Soulis at #Hermitage Castle.

The Armstrongs were a powerful and warlike clan with towers locally at #whithaughtower and #mangetontower. The Cross is considered one the oldest monuments to #clanarmstrong and it's a testament to their enduring legacy in the region. #welers



#whithaughtower

Beneath open skies and the towering Christianbury Crag, the spirit of the 'Debatable Land' lingers. For over three centuries, this wild region of #Bewcastle was fought over by lawless #BorderReivers, including the formidable #Armstrong clan of #whithaughtower, who fiercely defended their lands.

A powerful reminder of a turbulent past. #Christianbury #ArmstrongLegacy #BorderHistory #ScottishBorders #LandscapesWithStories #welters



If #trees could talk, the #stories this one would tell! Standing #strong through #seasons and #centuries at #whithaughtower this #ancientoak is a silent witness to so much #history #AncientTree #NatureLover #ForestWhispers #TreeOfLife #SilentStories #IfTreesCouldTalk #clan #nature #environmental #climatechange #standingstones #welters



#whithaughtower

Happy Fungi Friday!

The sheer variety and beauty of fungi here at #whithaughtower is just incredible and a constant reminder of a hidden world thriving beneath our feet!

#fungi #whithaugh #trees #nature
#mushroom #climate
#climatechange #photography #forest
#leaves #autumn #mycology #armstrong
#peeltower

Have you ever encountered a creature so ancient, so intertwined with the forest, that it seems to be part of the very earth?

Deep within the rare and wild temperate rainforest environment at #whithaughtower a mystery awaits.

This majestic, moss-covered creature adorned with fern and lichen waits silently.

Whatever its origin, it stands as a powerful symbol of the ancient connections between the land, the wildlife, and the enduring magic of Scotland's forests. What do you think this mossy marvel is guarding?





A frosty start this morning at #whithaughtower and a clean crisp beginning to the new week.

Just look at this pure natural ice art!
#Winter #IceCrystals #NatureLover #ice
#rocks #standingstones #welters #cold
#freezing #nature #photography #photo
#environment #climatechange



Zoom in. No, closer. EVEN CLOSER. Bet you didn't expect to be having an intense staring contest with a bull today, did you?

This magnificent White Shorthorn Bull has us completely captivated with his stunning, deep-set eyes and incredible woolly coat.

#whithaughtower #CloseUp
#ZoomIn #StaringContest
#WhiteShorthorn #blackgalloway
#AnimalDetails #gallowaycattle #bull
#CattlePhotography #UnexpectedBeauty
#DailyDoseOfCute #EyeSpy #cows
#closeup #welters



Another frosty start but the sun is already working its magic!

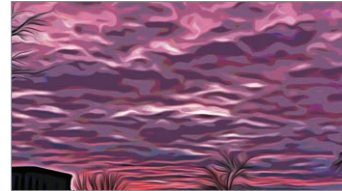
There's something so peaceful about these crisp mornings amongst the large oaks of #whithaughtower.

Who else is up and enjoying the quiet of the morning?

#FrostyStart #WinterMorning #Sunrise
#NatureLover #PeacefulVibes #frost #ice
#winter #nature #tree #oaktrees #forest
#welers



KeithWeltersImages



Visit KeithWeltersImages shop on Etsy.com to view and purchase our images (a few examples shown above). Visit <https://keithweltersimages.etsy.com> or click on the QR code above.

