

welters world™

A Government World Supplement

January - March 2025



welters world™

News and product updates from **welters®** organisation worldwide. A place to share our interesting work in agriculture with our heritage herds, historic site restoration, furniture design, stone manufacturing and much more.

welters®

ORGANISATION
WORLDWIDE

Design and Innovation



New Life

~ nature at it's finest as Spring approaches

Native Gene Agriculture



welters®

welters® Native Gene Agriculture

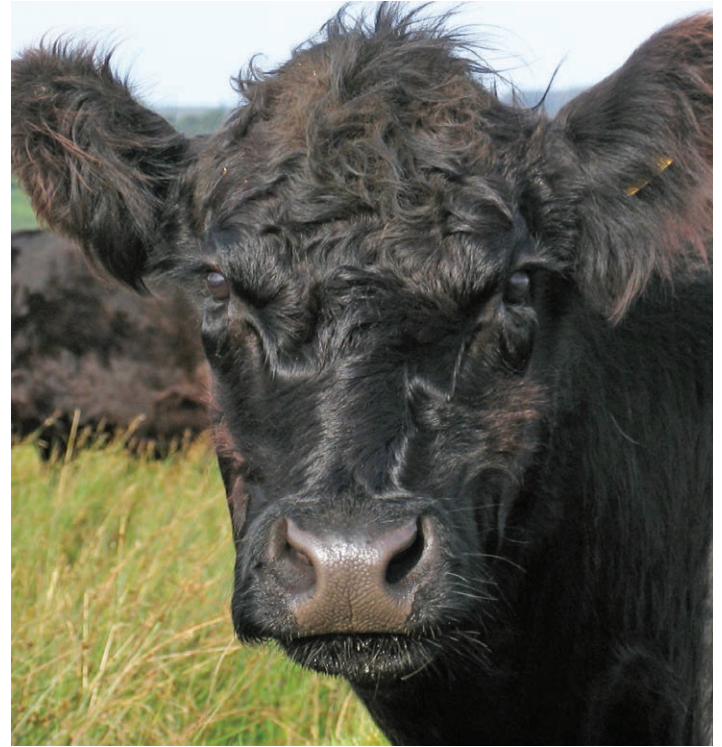
Black Galloway - White Galloway - White Shorthorn - Blue Grey




Native Gene Agriculture



Black Galloway - White Shorthorn - White Galloway - Blue Grey



White Galloway & Black
Galloway cows with a Blue
Grey calf - all showing off their
beautiful colourings

A close-up photograph of a White Galloway cow's face. The cow has thick, wavy white hair covering its face and head. Its eyes are dark and partially closed. The nose is large and black. The ears are also black. The background is a blurred green field.

**A White
Galloway
cow -
note the
distinctive
white hair
with black
nose and
ears**

Native Gene Agriculture

White Galloway Cows enjoying the scenery & posing for the camera

**A White Galloway cow
with her calf. The
calf's hair is pristine
while she cheekily
sticks her tongue out
for the camera.**





**A proud Black
Galloway bull. The
curls around his face
are just beautiful.**



**A young White Shorthorn bull.
He has white hair similar to
the White Galloway but is
distinguished by his pink
nose, light eyelashes and
white ears.**





Temperate Rainforest & Agriculture

The Aspen Tree. One of Scotland's rarest native trees.

Welters encourage and participate in new growth support and development.

Further information will follow in forthcoming updates to Welters World.

welters[®]
ORGANISATION
WORLDWIDE
Design and Innovation

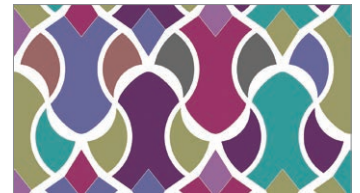


Image from scotlink.org



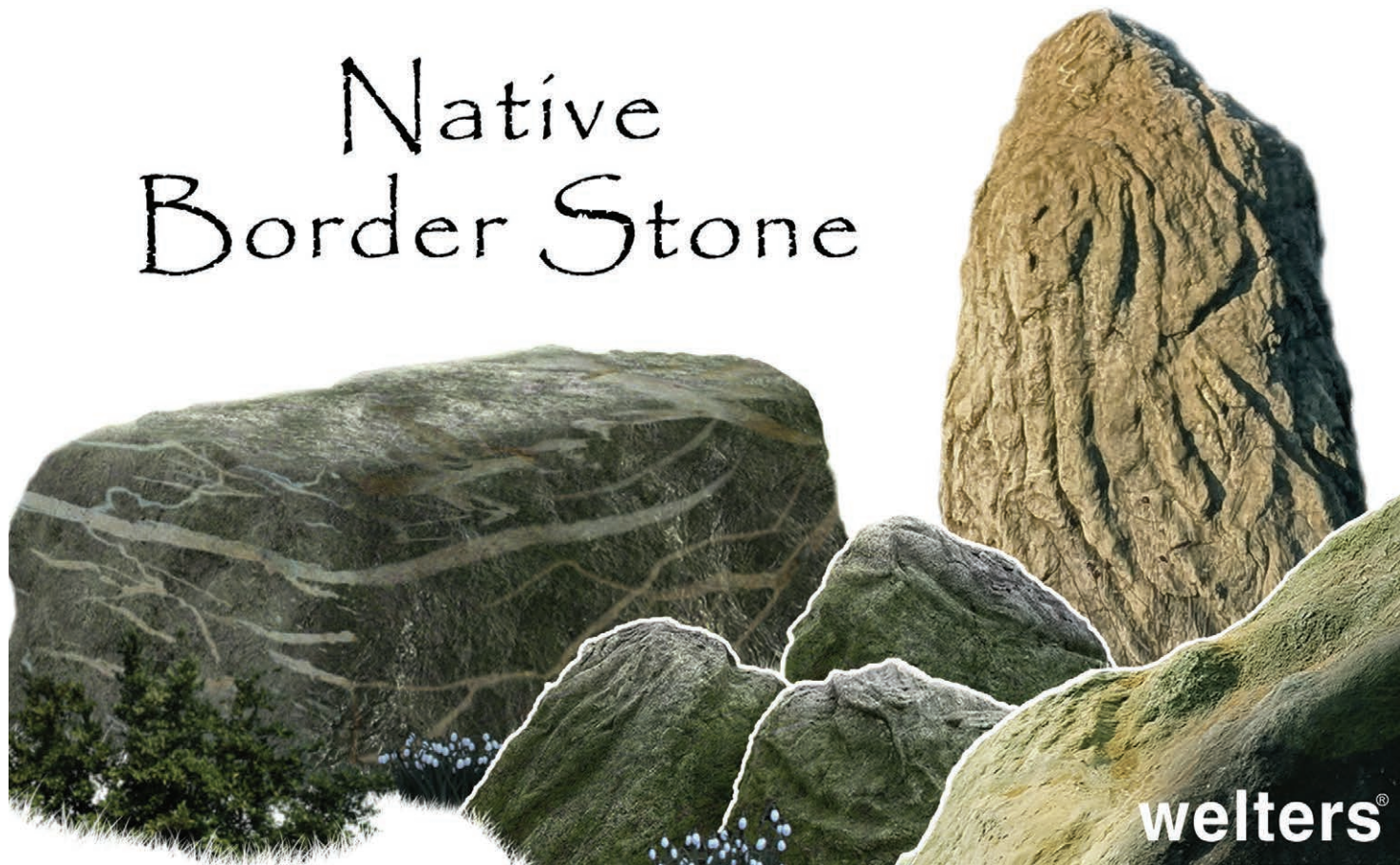


KeithWelters



Visit KeithWelters' shop on REDBUBBLE to view and purchase designs and products (a few examples shown above). Visit www.redbubble.com/people/KeithWelters or click on the QR code above.

Native Border Stone



welters®

A photograph of a lush forest landscape. In the foreground, a small stream flows through a bed of mossy rocks and fallen branches. Several large, moss-covered standing stones and boulders are scattered throughout the scene. Tall, thin trees with green foliage form a dense canopy in the background, with sunlight filtering through the leaves. The overall atmosphere is serene and natural.

welters®
ORGANISATION
WORLDWIDE

British Border Stone

Standing stones, rocks & boulders to complement any outdoor space

3 generations of INNOVATION

Megalithic
Influence

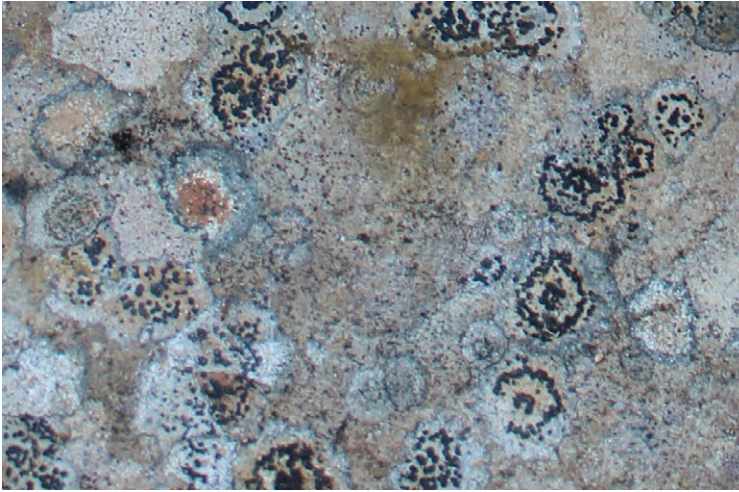
Climate
Change

Reflecting
Nature

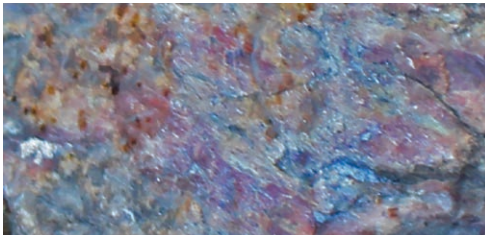
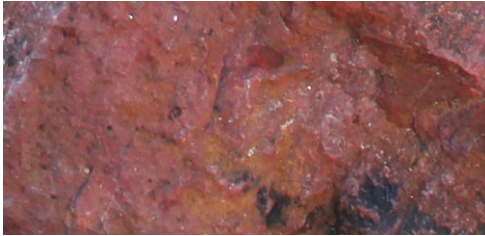
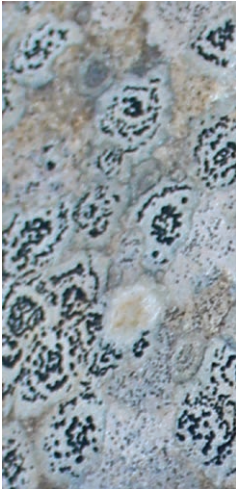
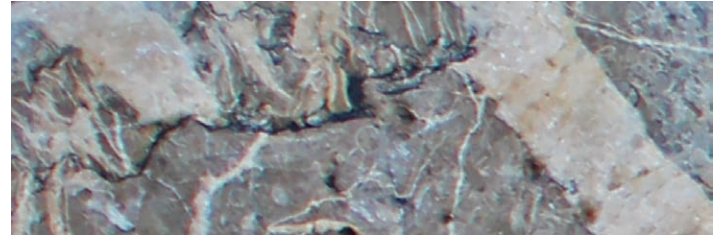
Re-useable
Materials

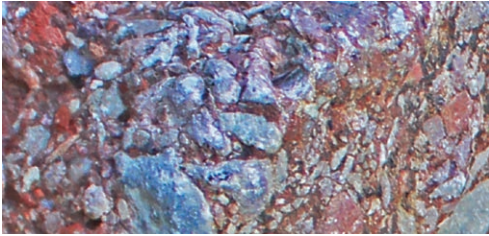
British Border Stone

welters®
ORGANISATION
WORLDWIDE

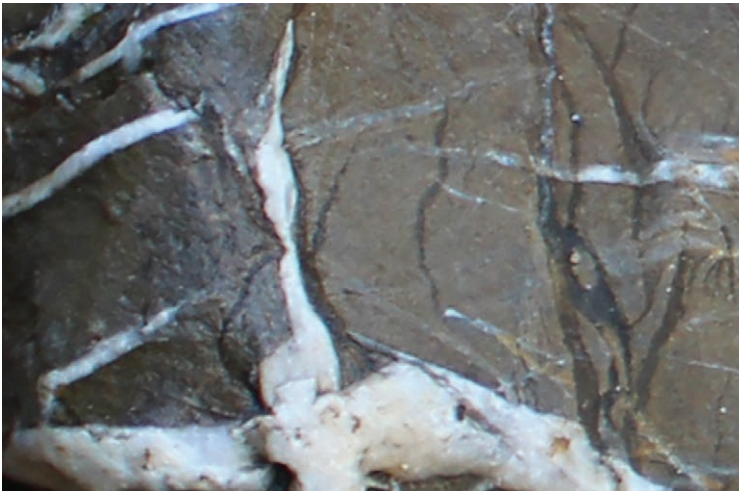


Examples of British Border Stone. These beautiful and varied natural stone finishes can be replicated in the manufacture of stone products, providing alternative options to the importation of granite, marble and other popular materials.





Our focus
is to help
slow climate
change
by helping
to reduce
greenhouse
gas
emissions.

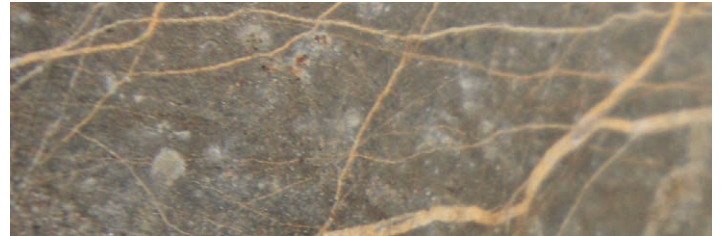


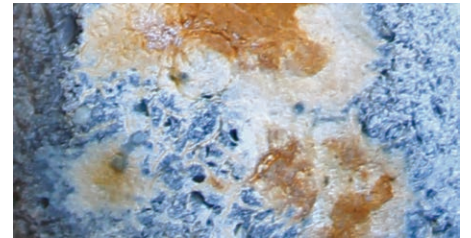
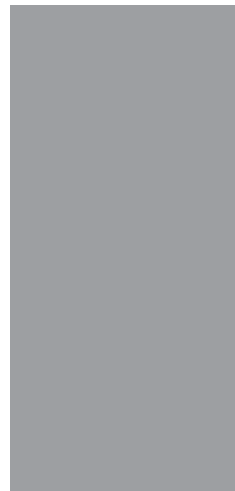
We do this by keeping our manufacturing in-house at our own facilities and by using locally sourced British materials. Not importing material from other countries.

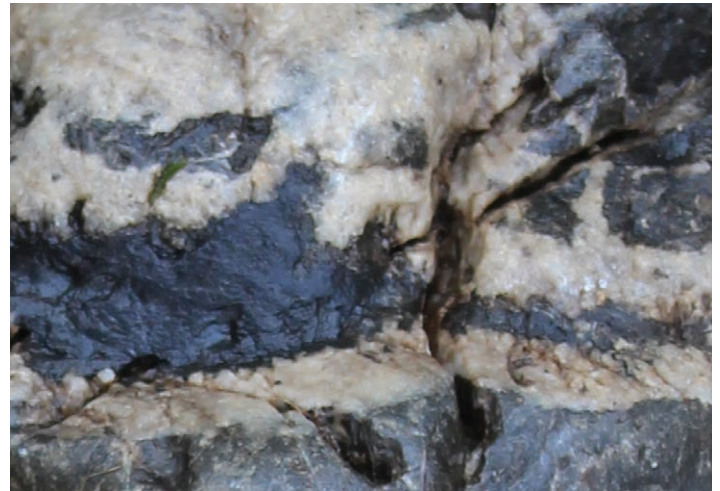




Particularly in the Borders, there is an abundance of interesting coloured and patterned stone as can be seen in these sample images.





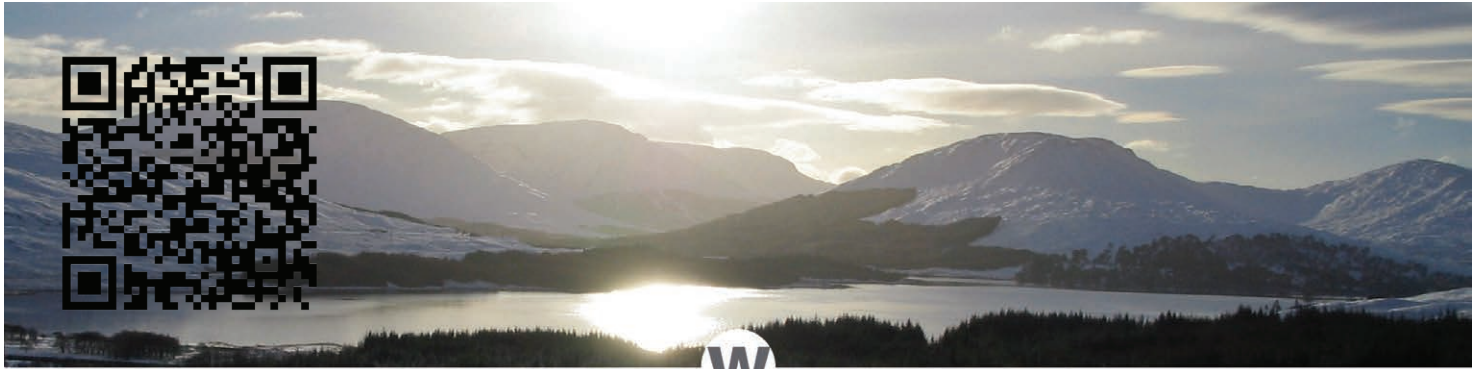




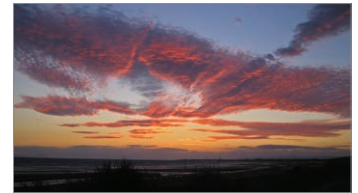
welters[®]
ORGANISATION

Design & Manufacture

Cold casting decorative products that stand the test of time



KeithWelters



Visit Keith Walters' shop on SHUTTERSTOCK to view and purchase images (a few examples shown above). Visit www.shutterstock.com/g/Keith+Walters or click on the QR code above.



Full body interment provision
- installation ~1995



Full body interment provision
- installation 2020/21



Cremated remains interment provision
- installation ~1993



Cremated remains interment provision
- installation 2015/19

welters®

ORGANISATION WORLDWIDE

DESIGN AND MANAGEMENT CONSULTANTS

RESEARCH, DEVELOPMENT AND
MANUFACTURING

**The Originators and
Leaders in the industry**

INNOVATION BY DESIGN
Creative and original

Over the past three decades, **welters®** have introduced new and innovative above and below ground interment and memorial facilities to the industry.

Today, many of these systems are accepted as standard nationwide and the company continues to produce new and original concepts, leading the way into the next decade.

Supplying products & systems for all full body interment needs, below & above ground, cremated remains & memorialisation.

Visit us at
www.welters-worldwide.com

WOW Gallery



Nature's burr orb

Border
stone
owls

welters®

The Art of Manufacturing

welters



Environmental Solution



Merging Nature with Technology & Trade Skills





welters

Essential Reuse

Saving the Planet

The image is a collage of natural elements. It features several large, grey, textured rocks of various shapes and sizes. Some rocks are in the foreground, while others are in the background. In the background, there are mossy tree trunks and a snowy forest scene with evergreen trees under a blue sky with white clouds. The overall composition is a mix of earthy tones and natural textures.

welters

The Freedom of The City of London Held by 3 generations of the Welters Family. A proud legacy.

Further details to follow in a forthcoming edition of Welters World

welters[®]
ORGANISATION
WORLDWIDE
Design and Innovation



