

welters world™

A Government World Supplement

October - December 2024



Focusing on Climate Change
& Global Warming

welters world™

News and product updates from **welters®** organisation worldwide. A place to share our interesting work in agriculture with our heritage herds, historic site restoration, furniture design, stone manufacturing and much more.

welters®

ORGANISATION
WORLDWIDE

Design and Innovation



Timber Harvesting

What is our timber being used for?



Mass quantities of felled logs on cleared land



The remains of felled trees on now barren land



Our timber is being harvested at alarming rates. Is this sustainable and where is the timber going?



Felled logs in front of full grown trees



Transportation by rail for biomass and other uses



Transportation on rural roads



Logs being moved and stored for further use



Logs being prepared for cutting and shaping into planks for sale



welters[®]

ORGANISATION
WORLDWIDE

Design and Innovation



The perfect solution to a the long-standing problem of housing shortages?

From concept design and models to final design, timber housing offers a long-lasting alternative solution whilst using sustainable, British sourced materials.

These houses stand the test of time and are designed with climate control and all of our carbon footprints in mind.



Examples of everyday, mass produced, high volume products made from

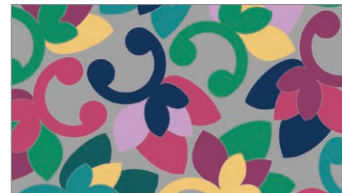


n timber.





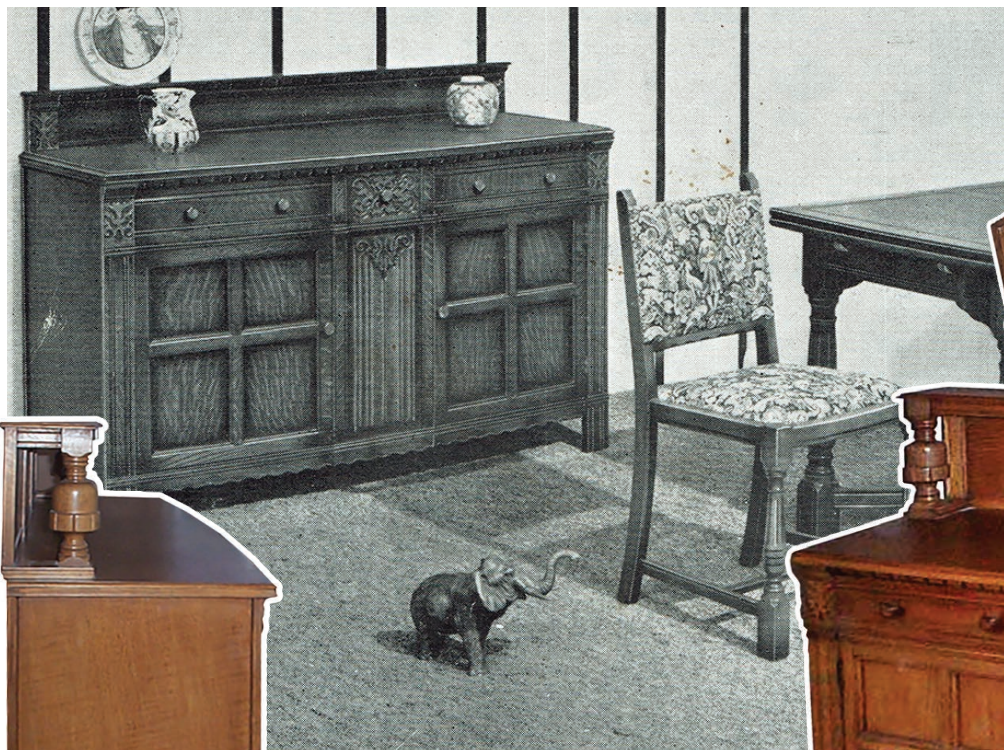
KeithWelters

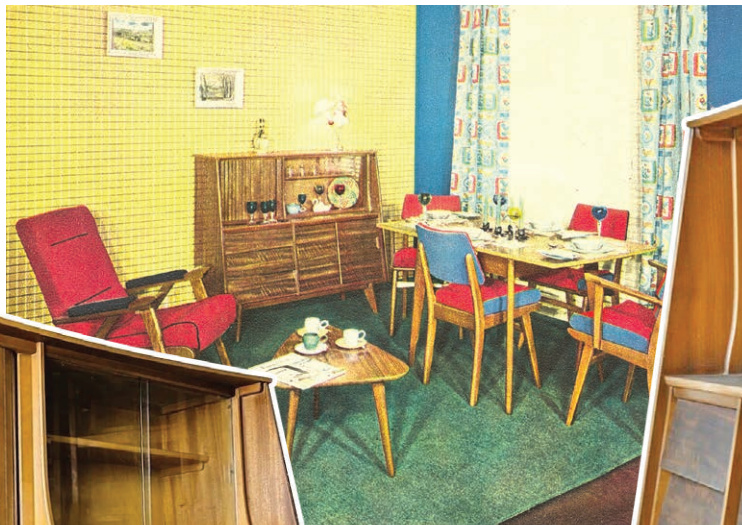
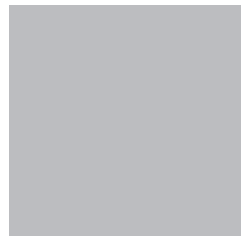


Visit KeithWelters' shop on REDBUBBLE to view and purchase designs and products (a few examples shown above). Visit www.redbubble.com/people/KeithWelters or click on the QR code above.

The following pages contain images of some of the furniture created by F.D. Welters Ltd after the 2nd world war, as examples of the prolific potential for timber products and woodworking skills.







Distinction

for dining room and living room



LOOK FOR THE WELTERS
ELEPHANT WHEN YOU BUY

All text from brochure
sheets are available
upon request

F. D. Welters Ltd.

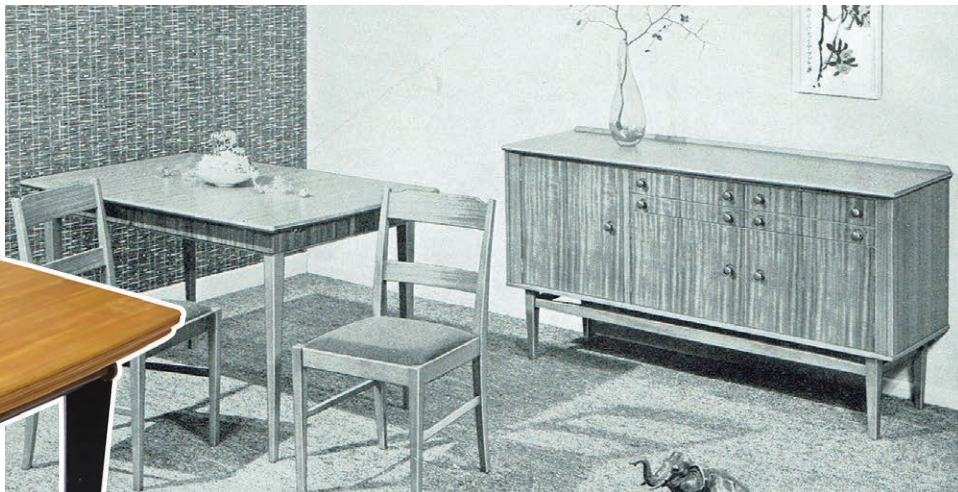


SIXTY Dining Set for details see Inside Front C.

WELTERS
furniture
1960









No. 653 COCKTAIL WAGON.

Exterior. Finished prime quality Paldao with ebony Finish legs.

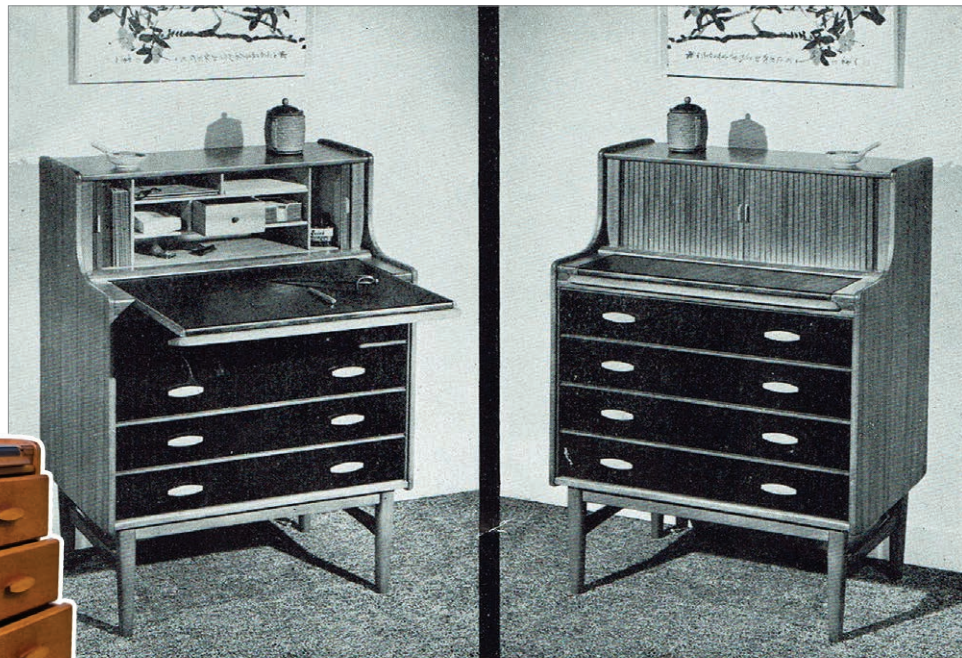
Interior. Mahogany Finish.

Size. Overall 25" x 18" x 31" high, including 3" rubber tyred wheels.

Raising of lid automatically lifts into position storage rack for glasses, with 3 baize-lined shelves and Warerite faced top. Lid-flap positions to form Warerite faced serving table. Well of cabinet is partitioned to provide storage for 10 bottles and will accommodate syphons. Edges of cabinet are lined and protected with a very smart black semi-resilient plastic edge.

Retail Price (Subject to market fluctuation) £22.7.0





No. 757 SECRETAIRE.

2' 6" wide × 3' 3" high.

Illustration No. 757P shows Paldao
Walnut veneers on top and ends.
Rosewood on drawer fronts.

No. 757M.

2' 6" wide × 3' 3" high.

With Mahogany on top and ends.
Rosewood on drawer fronts.

No. 757T.

2' 6" wide × 3' 3" high.

With Teak veneers on top ends and
drawer fronts.

Retail Price:
(Subject to market fluctuation) £27.15.0





AN IMPROVED TROLLEY TABLE

No. 651

Retail Price
(Subject to market fluctuation)
£13.6.0

DESCRIPTION

1. Top Tray is reversible, one side lined with Waverite and one side with the timber to match finish selected.
2. Extending flaps lined one side Waverite.
3. Accessory drawer partly baize-lined and divided for cutlery—accessible from both sides.
4. Bottom tray lined with the timber to match finish selected—accessible from both sides.

When not in service the flaps are closed, the top tray is replaced with the wooden surface exposed and you have a delightful side or occasional table to meet any functional need required.



Showing use as table with extended pull out flaps, overall sizes, $3' 11\frac{1}{2}" \times 17\frac{1}{2}" \times 26"$ high.

ALL FITTED WITH BEST QUALITY
CHROMIUM PLATED SHOCK AB-
SORBING WHEELS.



Illustration showing use as Trolley.
overall sizes $28\frac{1}{2}" \times 17\frac{1}{2}" \times 26"$ high.



No. 815 Nest of Tables. All Solid Oak. Overall size—
20" × 15" × 18" high.

No. 816 Nest of Tables. All Solid Walnut. Overall size
—20" × 15" × 18" high.

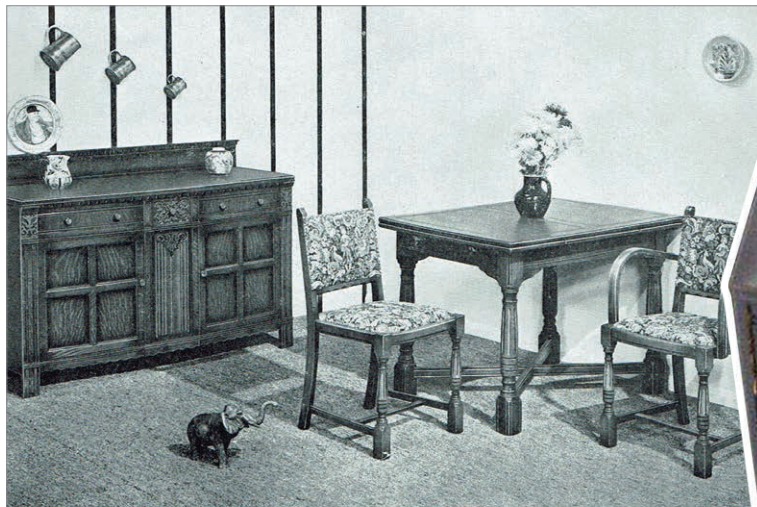
Retail prices (Subject to market fluctuation) £7.0.6



No. 808 Coffee Table. Finished either Walnut
or Mahogany Colour as desired.
Overall size of top approx
Height 16".

Retail Price (Subject to market fluctuation)





“THREE” DINING SET

Incorporating finest quality Oak.

Our suggested finish:

Reproduction Golden Waxed Oak colour.

No. 3 Sideboard. 4' 6" Canted front. Shelf in each cupboard. Loose cutlery tray in drawer.

No. 103 Pull-out Table. Closed 3' 6" × 2' 6". Extended 5' 6" × 2' 6". Can be supplied with or without underframing.

No. 203A Chair. Upholstered back.

No. 203B Chair. Upholstered back. With arms.

Retail Prices (Subject to market fluctuation).

Sideboard £31.5.0 Table £17.12.0

Small chair £5.6.6 Armchair £6.16.6

Set complete 3/103/203A with 4 chairs from £70.3.0 according to cover selected.

No. 756 Bureau. 2' 6" × 1' 4" × 3' 5" high. Fitted Pigeon Hole Fitment, and Blotting Pad on inside of flap. Shelf in cupboard.

Retail Price (Subject to market fluctuation) £21.3.6





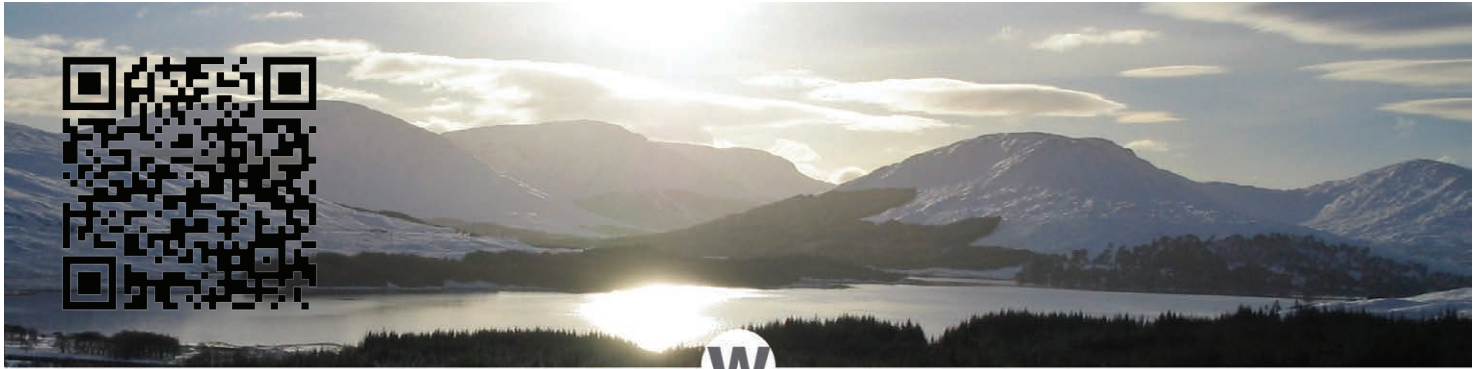
No. 901



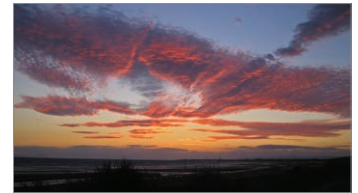
No. 902



No. 900



KeithWelters



Visit Keith Walters' shop on SHUTTERSTOCK to view and purchase images (a few examples shown above). Visit www.shutterstock.com/g/Keith+Walters or click on the QR code above.

Intellectual Design, Production
& Support Services

welters[®]
ORGANISATION
WORLDWIDE
Concept Originators

www.welters-worldwide.com
admin@welters-worldwide.com



Standing stones and boulders - manufactured with ice cap and volcanic rock elements
Suitable for an endless number of applications including parks, gardens, cemeteries,
crematoria, woodland areas, sea defences, stage sets, etc

Above & below ground full body interment solutions and memorial options



Environmental stone memorials
- made to order for communities,
families or individuals



Cremated remains memorial
 housings with or without below
ground interments

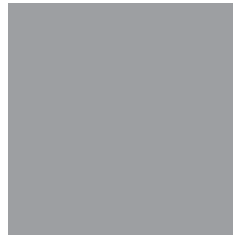


*"Go where you are appreciated - not
where you are tolerated"*

Visit us at www.welters-worldwide.com

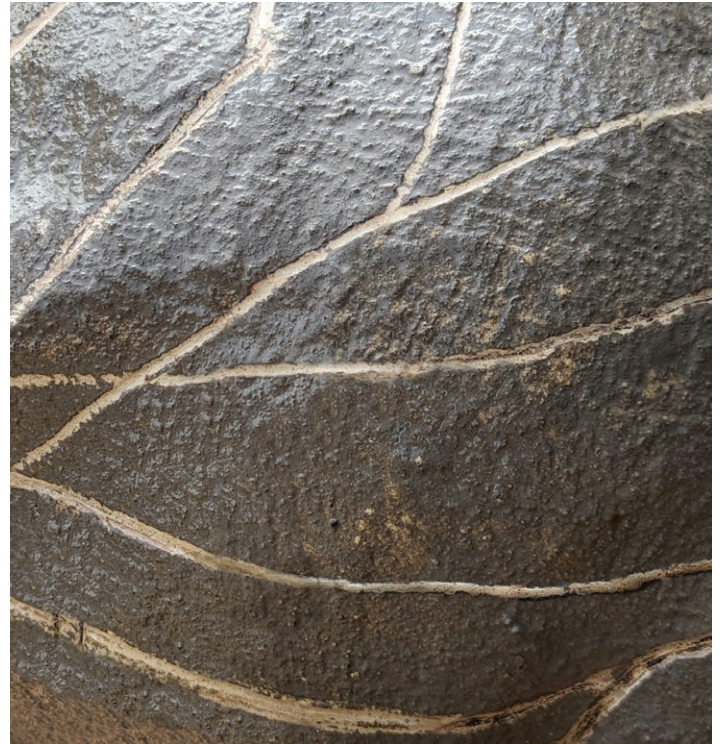
The unique beauty of Border Stone orbs & sarcophagi, laid to rest amidst the springtime emergence of new life following Winter storms, achievable through the implementation of re-use procedures in our manufacturing processes.

welters® Border Stone - full of character and used to produce some of our most eye-catching products.



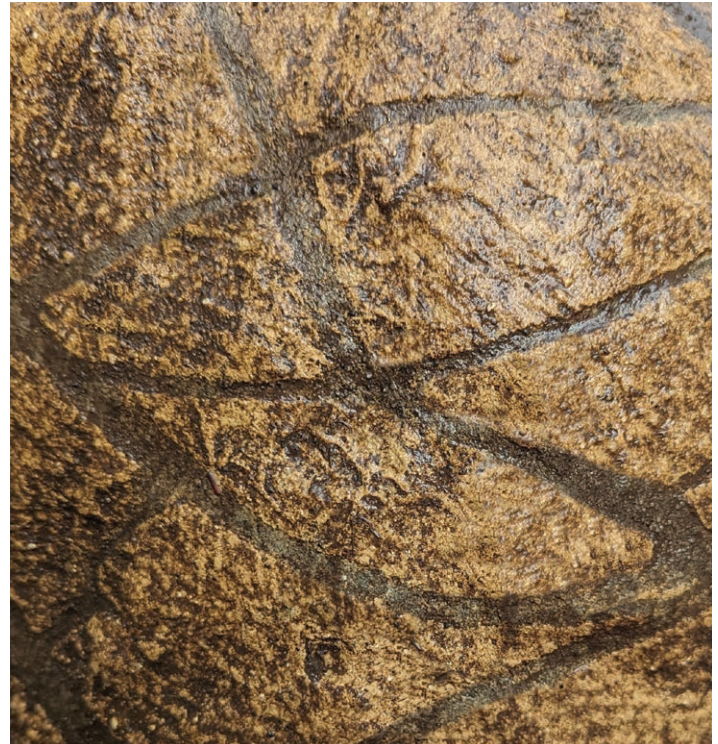
welters® Border Stone is incorporated in product produced by **welters®** under their Environmental Umbrella which is renowned globally.

Border Stone is not only a fully matured natural phenomena but when utilised with Environmental elements and **welters®** craft experience, the full potential benefit of the concept is revealed.



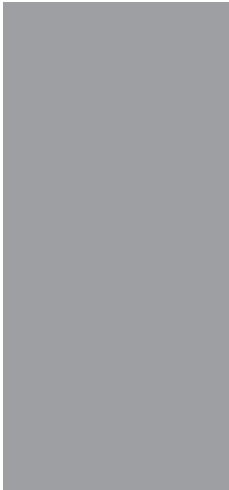
welters® Border Stone, which is deposited in almost any colour, is often revealed with bold stripes in a magical strata or web of glorious artistry which remains forever, and only muted over time by nature itself.

A truly unique & priceless result enhanced only by the retardation of the ice cap so many moons ago.



Complementing the border stone products are our aged stone products. Monitored over many years, the resulting patterns and effects caused by nature are truly beautiful.







The Burr Orb

Fighting
climate change

Carbon offsetting

Renewable

Sustainable
materials

Zero-waste



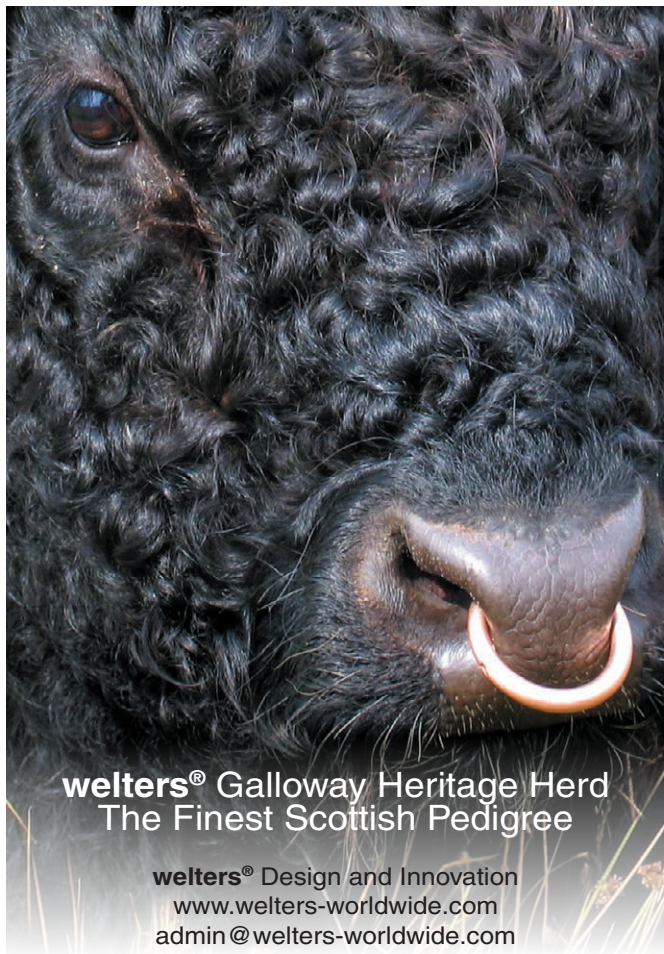
welters[®]
ORGANISATION
WORLDWIDE



Examples of naturally occurring
burr orbs - the inspiration behind
many of the timber structures
design and created by **welters®**

Doesn't he look like a friendly
little alien?





welters® Galloway Heritage Herd
The Finest Scottish Pedigree

welters® Design and Innovation
www.welters-worldwide.com
admin@welters-worldwide.com



The Heritage Herd
White Galloways

welters®
ORGANISATION
WORLDWIDE

+44 (0) 1387 375220
+44 (0) 7710 109 457
www.welters-worldwide.com
admin@welters-worldwide.com

Season's Greetings

from all of us at **welters**[®]



welters[®]
ORGANISATION
WORLDWIDE

