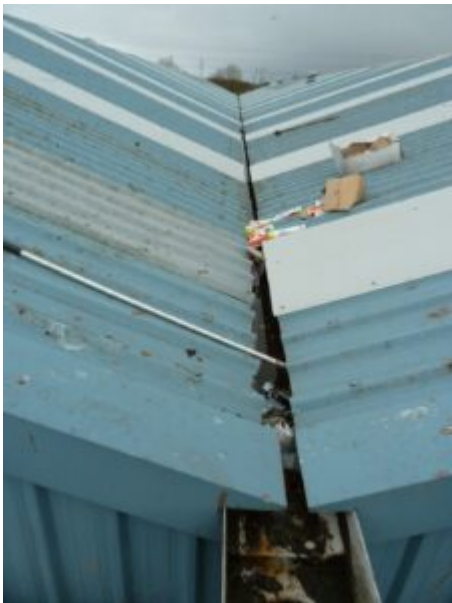


# Company fined after worker suffers life-changing injuries in fall

A Cumbrian construction company has been fined after a man was critically injured falling 10m through the roof of an industrial unit.

Craig Dickson, 39, from Carlisle, suffered multiple serious fractures, in the incident on Heathlands Industrial Estate, Kingmoor Park, Carlisle, on 25 March 2022.

CK Steelwork & Cladding Ltd were the contractor undertaking work on the roof of the building. The roof was known to be fragile, and, at the time of the incident, safety nets were being erected below the work area, although this work had not been completed.



Unit roof

Despite this, Mr Dickson was taken onto the roof by a supervisor to assess the job. While crossing an area of the roof that was not protected by the nets, he stepped onto a weak skylight which gave way, and he fell head-first around 10m onto the concrete floor below.

Mr Dickson shattered most of the bones in his face, hands, and wrists. He lost four teeth and severely damaged his knee. He spent six weeks in intensive care and was confined to a wheelchair for five months. Since the accident he has endured constant pain, and 17 months later is still unable to work; he will never be able to return to his former profession.

HSE has guidance on [working safely at height](#).

In a victim impact statement Craig Dickson said: "The accident broke every bone in my face and knocked out my front four teeth. This has made me have zero confidence and major anxiety, which I now have to see a psychiatrist for, every week. My nose was badly broken, which has left me with no sense of

smell, and I have difficulty breathing through it.

“Before my accident I was a very physically and mentally active person and attended the gym on a daily basis and was a keen fell walker and liked to socialise. I am now left in severe pain and now have anxiety and I’m always anxious and find it hard, if not impossible to do anything like I did before the accident.”

An investigation by the Health and Safety Executive (HSE) found that CK Steelwork & Cladding Ltd of Barras Lane Estate, Dalston, Carlisle, had failed to take appropriate precautions to ensure the safety of workers on the roof.



Skylight roof

The company pleaded guilty to breaching regulation 4(1) of the Work at Height Regulations 2005. They were fined £16,000 and were ordered to pay £4,462.59 in costs at a hearing at Carlisle Magistrates Court on 31 August 2023.

After the hearing, HSE inspector Michael Griffiths said: “This was a very serious incident, and it is fortunate Craig wasn’t killed.

“Work on fragile roofs should be planned and controlled, otherwise there is a very high likelihood of a potentially fatal fall, or one resulting in life changing injuries, as we have seen in this case.”

This HSE prosecution was supported by Jonathan Bambro and Rebecca Forman in HSE’s Legal Services Division.

#### **Notes to Editors:**

1. [The Health and Safety Executive](#) (HSE) is Britain’s national regulator for workplace health and safety. We prevent work-related death, injury and ill health through regulatory actions that range from influencing behaviours across whole industry sectors through to targeted interventions on individual businesses. These activities are supported by globally recognised scientific expertise.
2. More information about the [legislation](#) referred to in this case is

available.

3. Further details on the latest [HSE news releases](#) is available.

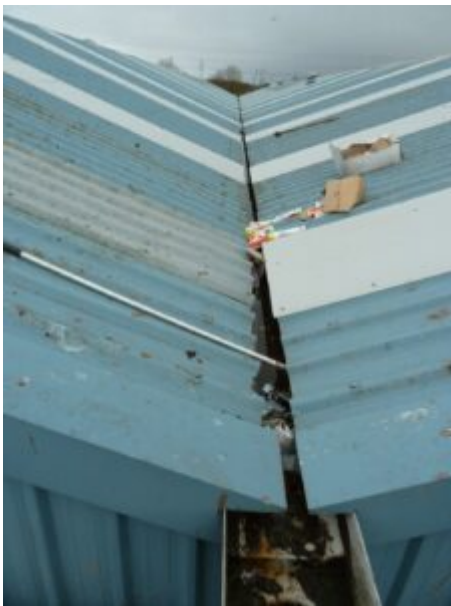
---

## **Company fined after worker suffers life-changing injuries in fall**

A Cumbrian construction company has been fined after a man was critically injured falling 10m through the roof of an industrial unit.

Craig Dickson, 39, from Carlisle, suffered multiple serious fractures, in the incident on Heathlands Industrial Estate, Kingmoor Park, Carlisle, on 25 March 2022.

CK Steelwork & Cladding Ltd were the contractor undertaking work on the roof of the building. The roof was known to be fragile, and, at the time of the incident, safety nets were being erected below the work area, although this work had not been completed.



Unit roof

Despite this, Mr Dickson was taken onto the roof by a supervisor to assess the job. While crossing an area of the roof that was not protected by the nets, he stepped onto a weak skylight which gave way, and he fell head-first around 10m onto the concrete floor below.

Mr Dickson shattered most of the bones in his face, hands, and wrists. He lost four teeth and severely damaged his knee. He spent six weeks in intensive care and was confined to a wheelchair for five months. Since the accident he has endured constant pain, and 17 months later is still unable to work; he will never be able to return to his former profession.

HSE has guidance on [working safely at height](#).

In a victim impact statement Craig Dickson said: “The accident broke every bone in my face and knocked out my front four teeth. This has made me have zero confidence and major anxiety, which I now have to see a psychiatrist for, every week. My nose was badly broken, which has left me with no sense of smell, and I have difficulty breathing through it.

“Before my accident I was a very physically and mentally active person and attended the gym on a daily basis and was a keen fell walker and liked to socialise. I am now left in severe pain and now have anxiety and I’m always anxious and find it hard, if not impossible to do anything like I did before the accident.”

An investigation by the Health and Safety Executive (HSE) found that CK Steelwork & Cladding Ltd of Barras Lane Estate, Dalston, Carlisle, had failed to take appropriate precautions to ensure the safety of workers on the roof.



Skylight roof

The company pleaded guilty to breaching regulation 4(1) of the Work at Height Regulations 2005. They were fined £16,000 and were ordered to pay £4,462.59 in costs at a hearing at Carlisle Magistrates Court on 31 August 2023.

After the hearing, HSE inspector Michael Griffiths said: “This was a very serious incident, and it is fortunate Craig wasn’t killed.

“Work on fragile roofs should be planned and controlled, otherwise there is a very high likelihood of a potentially fatal fall, or one resulting in life changing injuries, as we have seen in this case.”

This HSE prosecution was supported by Jonathan Bambro and Rebecca Forman in HSE’s Legal Services Division.

#### **Notes to Editors:**

1. [The Health and Safety Executive](#) (HSE) is Britain’s national regulator

for workplace health and safety. We prevent work-related death, injury and ill health through regulatory actions that range from influencing behaviours across whole industry sectors through to targeted interventions on individual businesses. These activities are supported by globally recognised scientific expertise.

2. More information about the [legislation](#) referred to in this case is available.
  3. Further details on the latest [HSE news releases](#) is available.
- 

## School trust fined after children injured by classroom ceiling collapse

An educational trust has been fined after 15 school children and their teacher were injured when their classroom ceiling collapsed during a lesson.

Fifteen Year 3 pupils, aged between seven and eight, and their teacher had the ceiling collapse onto them at Rosemead Preparatory School in London, at around 9.30am on 15 November 2021. Tables and chairs being stored in the attic above were among the falling debris.

The children and teacher sustained upper limb fractures, cuts as well as concussion.

Emergency services attended the school on Thurlow Park Road, Dulwich, following the incident with the class teacher and several pupils taken to hospital for assessment and treatment. There were 16 pupils in the class but one student was by the doorway when the incident happened.

A Health and Safety Executive (HSE) investigation found items such as desks and chairs were stored in an unsuitable area in the school's attic. This area was not designed to be load bearing and led to the ceiling collapsing.

The HSE investigation also found Thurlow Educational Trust had failed to undertake any structural or load bearing capability assessments of the area being used to store the items. The trust had also failed to assess whether the area in question was appropriate to be used for the storage of these items.



HSE guidance can be found [here](#).

Thurlow Educational Trust, of Thurlow Park Road, Dulwich, London, pleaded guilty to breaching Section 2(1) and Section 3(1) of the Health and Safety at Work etc. Act 1974. The trust was fined £80,000 and ordered to pay £7,116.31 in costs at Westminster Magistrates' Court on 29 August 2023.

HSE inspector Samuel Brown said: "This incident has resulted in injuries to multiple young children due to the failings of the school to ensure that chairs and tables were safely stored above their classroom.

"Schools should be a place where children can come to learn from teachers and one another without having to worry about their safety.

"Fortunately, this incident did not cause any more serious injuries, but the mental and emotional impact of such an event should not be understated.



“Employers need to take action to ensure that building stability and solidity problems are not caused through overloading areas not designed to bear weight. As proven, the failure to do so can have severe consequences.”

This HSE prosecution was supported by HSE enforcement lawyer Samantha Crockett.

#### **Notes to Editors:**

1. The [Health and Safety Executive](#) (HSE) is Britain’s national regulator for workplace health and safety. We prevent work-related death, injury and ill health through regulatory actions that range from influencing behaviours across whole industry sectors through to targeted interventions on individual businesses. These activities are supported by globally recognised scientific expertise.
2. More information about the [legislation](#) referred to in this case is available.
3. Further details on the latest [HSE news releases](#) is available.

---

## **Five HS2 workers injured in incident**

Inspectors from the Health and Safety Executive (HSE) are today (Tuesday 29 August) at the site of an incident where five HS2 workers were injured.

Work is underway to identify the cause following the incident at the Mandeville Road site next to Northolt Tube station in London, on Saturday 26 August. Emergency services responded.



Four people involved in the incident have been discharged from hospital while one worker remains in hospital.

HSE inspector Gordon Nixon said: "We are working with all parties involved. At the moment, we are making initial enquiries. If there will be a full HSE investigation, this will take time."

#### Notes to editors

1. [The Health and Safety Executive](#) (HSE) is Britain's national regulator for workplace health and safety. We prevent work-related death, injury and ill health through regulatory actions that range from influencing behaviours across whole industry sectors through to targeted interventions on individual businesses. These activities are supported by globally recognised scientific expertise.
  2. More information about the [legislation](#) referred to in this case is available.
  3. Further details on the latest [HSE news releases](#) is available.
- 

## [£535,000 fine for oil and gas firm after man injured on North Sea platform](#)

An oil and gas company has been fined £535,000 after a worker sustained life changing injuries following the uncontrolled collapse of a crane.

Greig Philip Harwood and John Divers, employees of Enermech Limited, were injured while working on the Fulmer Alpha North Sea oil platform on 11 September 2017. Aberdeen Sheriff Court heard that the 13 tonne, 45 metre long crane boom fell to the deck without warning, with flying parts hitting both men.

Mr Harwood suffered a fractured jaw and lacerations to his chest. He had his jaw wired together and three titanium plates fitted. He could not eat solid food for around four months. He also suffered psychological damage and was diagnosed with anxiety, trauma and depression as a result of this trauma and has stopped working in the offshore industry. He continues to have physical symptoms where he cannot open his mouth fully and has no feeling in his lower jaw due to nerve damage.

John Divers also suffered physiologically and required counselling sessions. He could not face working offshore for 12 months.

By less than half a metre, the crane boom missed a high pressure flare line, a fuel gas line and the main oil line. If any of these had been hit it could



have resulted in a serious hydrocarbon release.

An investigation by the Health and Safety Executive (HSE) found that the company had failed to carry out a suitable and sufficient assessment of the risks of the work and had failed to maintain the crane braking systems and equipment in a safe condition before work commenced.

Repsol Sinopec Resources UK Limited of Holburn Street, Aberdeen pleaded guilty to breaching Section 3(1) and Section 2(1) of the Health and Safety at Work etc Act 1974 and were subsequently fined £535,000.

Speaking after the hearing, HSE principal inspector Dr Stephen Hargreaves said:

“Greig Harwood and John Divers are lucky to be alive. This incident could so easily have been avoided by simply carrying out Suitable control measures and safe working practices.

“A North Sea Oil Platform is a hazardous environment, and it was again pure luck that the crane boom, which crashed to the deck, narrowly missed high pressure gas and oil processing equipment.. This incident could have been avoided had the company properly planned and risk assessed the work and adequately maintained their cranes.”

“It is very disappointing that we are seeing failings of this nature bringing those working on North Sea Installations perilously close to disaster.”

## Notes to editors

1. [The Health and Safety Executive](#) (HSE) is Britain’s national regulator for workplace health and safety. We prevent work-related death, injury and ill health through regulatory actions that range from influencing behaviours across whole industry sectors through to targeted interventions on individual businesses. These activities are supported by globally recognised scientific expertise.
2. More information about the [legislation](#) referred to in this case is available.
3. Further details on the latest [HSE news releases](#) is available.