

## Government gazettes regulations on reduction of water and sewage charges for non-domestic accounts

The Government published in the Gazette today (March 19) the Waterworks (Amendment) Regulation 2021 and the Sewage Services (Sewage Charge) (Amendment) Regulation 2021 to give effect to the extension of the existing reduction of the water and sewage charges for non-domestic accounts as announced by the Financial Secretary in the 2021-22 Budget. The measures aim to provide relief to the businesses concerned and it is expected that about 250 000 non-domestic users will benefit.

"The measures are to extend the 75 per cent reduction of the water and sewage charges for non-domestic accounts for eight months from April 1, 2021, to November 30, 2021, subject to a monthly cap of \$20,000 and \$12,500 respectively for each meter covered by a water bill. After publication in the Gazette, the regulations will be tabled at the next sitting of the Legislative Council for negative vetting," a Government spokesman said.

The estimated government revenue foregone for extending the reduction of water and sewage charges for non-domestic accounts is about \$440 million and \$240 million respectively.

---

## Appointments to Board of Governors of Hong Kong Arts Centre

The Chief Executive has re-appointed Mrs Dominica Yang as the Chairman of the Board of Governors of the Hong Kong Arts Centre for a period of one year from April 1, 2021, to March 31, 2022.

The Chief Executive has also re-appointed Mr Peter Lau Man-pong and Ms Maggie Tsui Yeuk-ting as members of the Board of Governors of the Hong Kong Arts Centre for a period of three years from April 1, 2021, to March 31, 2024.

The appointments are published in the Government Gazette today (March 19).

---

# Employees Compensation Assistance Ordinance (Amendment of Schedule 4) Notice 2021 gazetted today

The Government today (March 19) published the Employees Compensation Assistance Ordinance (Amendment of Schedule 4) Notice 2021 in the Gazette to upwardly adjust the levels of the three relief payment items, namely the prescribed relief payment, the prescribed monthly amount and the prescribed monthly amount (extra).

The Employees Compensation Assistance Fund (the Fund) is administered by the Employees Compensation Assistance Fund Board in accordance with the Employees Compensation Assistance Ordinance (ECAO). The Fund provides relief payments to injured employees or eligible persons who have sustained injuries caused by accidents arising out of and in the course of employment, given that the court awards an amount of common law damages to be payable by their employers, but are unable to receive their entitlements from the employers or insurers after exhausting all legal and financially viable means of recovery.

According to the ECAO, the employee (or eligible person) shall receive the full amount of the relief payment where the amount does not exceed the prescribed relief payment. Where the amount of a relief payment exceeds the prescribed relief payment, the employee (or eligible person) can receive a first payment equivalent to the prescribed relief payment, followed by monthly payments (an amount equal to the prescribed monthly amount or the monthly earnings of the employee at the time of the accident, whichever is the higher). If the employee is severely injured, he/she can receive the prescribed monthly amount (extra) at the same time. Schedule 4 of the ECAO currently stipulates that the amount of prescribed relief payment is \$1,500,000, the prescribed monthly amount is \$10,000 and the prescribed monthly amount (extra) is also \$10,000.

Having studied and prudently considered various factors such as the unique circumstances and needs of the injured employees as well as the financial situation and sustainability of the Fund, etc, the levels of prescribed relief payment, prescribed monthly amount and prescribed monthly amount (extra) are to be adjusted upwards on a one-off basis, to \$6,000,000, \$40,000 and \$40,000 respectively.

"As the earning capacity for injured employees will be affected after the injury, and the extent of which will depend on the severity of injury sustained, the revised levels of three prescribed relief payment items will help provide a substantial sum of first payment and enhanced monthly payments to the injured employees (especially those who are severely injured) and their family members to sustain their living and meet their needs," a spokesman for the Labour Department said.

The Notice will be introduced into the Legislative Council on March 24. Upon the completion of the negative vetting procedure by the Legislative Council, the new payment levels will come into effect on May 14.

---

## [Pierside Precinct at Wan Chai harbourfront further opens \(with photos\)](#)

The Pierside Precinct located at the Wan Chai Pier harbourfront area was further opened today (March 19), providing more harbourfront leisure space for the general public.

A spokesman for the Development Bureau said, "The newly opened space is located between the Hong Kong Convention and Exhibition Centre and Wan Chai Pier. Under an incremental approach, a 5-metre-wide promenade section was first opened last December, connecting Wan Chai North into a 5.5-kilometre-long promenade reaching west to Shek Tong Tsui, the longest promenade alongside Victoria Harbour. The space opened today, with a size of about 2 750 square metres, has broadened the promenade section by three times."

In contrast to the colourful cartoon style adopted at the other harbourfront sites recently opened in Western District and Wan Chai, the Precinct mainly comprises simple fair-faced concrete and wooden structures. With its clear and rectilinear layout and earth-tone colours, the new space features a stylish touch, echoing the overall direction of making every section special in harbourfront development.

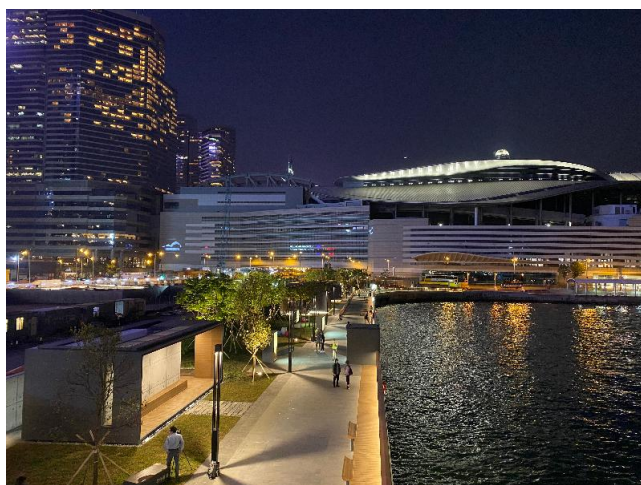
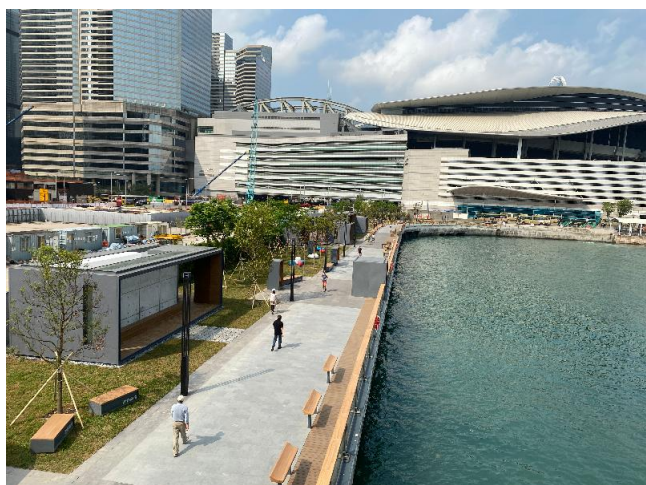
In order to better capture the magnificent harbour view, a design concept with photo frames and neon lights has been used to decorate the new space, offering lots of check-in spots for photo shooting. Visitors can not only take photos with berthing Star Ferry vessels and Tsim Sha Tsui on the opposite side of the harbour as backdrops, but may also carry out a diverse range of activities at the many spacious covered areas. As a number of reclamation projects have been carried out in Wan Chai over the past century or more, the design team has made use of neon light decorations and maps to introduce the changes to the approximately 1km of coastline north of Queen's Road East during the period. The space is also lined with trees to offer ample shade. Coupled with pebble paths and numerous seats and tables of various designs, the space lets the public enjoy the harbourfront in relaxing ways. The promenade is a pet-friendly site where pets on leashes are welcome to visit. A pet garden where pets can run freely will be provided in the promenade section to be completed in the next phase.

Local creative talents have also taken part in the building of the

Pierside Precinct. A winning entry of the Harbourfront Public Furniture Competition, "VH Puzzled", designed by a project team led by Samuel Wong, has already been installed in the Precinct, where more winning entries will also be displayed in the near future. In addition, a limited-time "pink corridor" was set up earlier when the Precinct was first opened to enable visitors to identify the routes more easily, create separation from the nearby worksites and enhance the visitor experience.

"We will continue to open more harbourfront spaces in phases while the infrastructure works at the Wan Chai harbourfront are in progress. It is anticipated that over 45 000 sq m of new open space at the Wan Chai harbourfront will be completed by the end of this year or early next year. By then, more diverse facilities will be provided for the enjoyment of individuals with different interests and of different age groups. The harbourfront development would create more opportunities for different sectors to take part in the development of the harbourfront, enhancing the community's sense of belonging to the harbourfront," the spokesman said.

The spokesman said that opening the harbourfront space in accordance with an incremental approach can help in collecting visitors' views and noting their experiences, thereby enabling the evolution of harbourfront spaces in an organic and interactive way by responding to users' needs.





---

## [The People's Bank of China will issue Renminbi Bills through the Central Moneymarkets Unit of the Hong Kong Monetary Authority](#)

The following is issued on behalf of the Hong Kong Monetary Authority:

The People's Bank of China (the "PBOC") will issue Renminbi Bills through the Central Moneymarkets Unit of the Hong Kong Monetary Authority (the "HKMA"). Please find attached the tender notice and the tender information memorandum of the Renminbi Bills to be issued by the PBOC. Please also find attached the tender-related information provided by the Issuing and Lodging Agent through the HKMA.