

# Hongkong Post to issue “Public Architecture in Hong Kong II” special stamps (with photos)

â€‹Hongkong Post announced today (February 5) that a set of special stamps and associated philatelic products on the theme of "Public Architecture in Hong Kong II" will be released for sale on February 20 (Thursday).

Public architecture is closely related to the daily lives of people. Following the "Public Architecture in Hong Kong" special stamps issued in 2016, Hongkong Post will present a set of six stamps and associated philatelic products themed "Public Architecture in Hong Kong II". The stamps, which feature six distinctive public buildings, namely Che Kung Temple Sports Centre, Oi!, Woosung Street Temporary Cooked Food Hawker Bazaar, GREEN@WAN CHAI, Tai Po Lung Mei Beach Building and Hong Kong Children's Hospital, highlight the innovative construction technologies and building designs that are inclusive and environmentally friendly.

Official first day covers for "Public Architecture in Hong Kong II" will be on sale at all post offices and Hongkong Post's online shopping mall ShopThruPost ([shopthrupost.hongkongpost.hk](http://shopthrupost.hongkongpost.hk)) from tomorrow (February 6), while postcards will be available at philatelic offices only. This set of special stamps and associated philatelic products will be on sale at all post offices and ShopThruPost from February 20, while serviced first day covers affixed with the special stamps and maximum cards will be available at philatelic offices only.

A hand-back date-stamping service will be provided on February 20 at all post offices for official first day covers/souvenir covers/privately made covers bearing the first day of issue indication and a local address.

Information about this set of special stamps and associated philatelic products is available on the Hongkong Post Stamps website ([stamps.hongkongpost.hk](http://stamps.hongkongpost.hk)).

香港公共建築II  
Public Architecture in Hong Kong II



郵票。  
Mint Stamps.



特別郵戳。  
Special Postmark.

香港公共建築II  
Public Architecture in Hong Kong II



小全張。  
Souvenir Sheet.

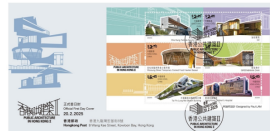
香港公共建築II  
Public Architecture in Hong Kong II



正式首日封。  
Official First Day Cover.

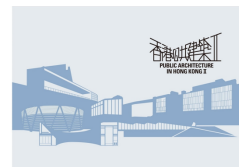


已蓋銷首日封連一套六枚郵票  
(以特別郵戳蓋銷)。  
Serviced First Day Cover affixed with a set of 6 stamps  
(date-stamped with special postmark).



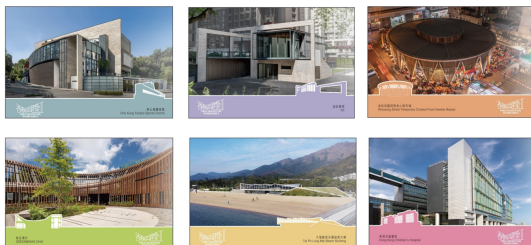
已蓋銷首日封連小全張  
(以特別郵戳蓋銷)。  
Serviced First Day Cover affixed with a souvenir sheet  
(date-stamped with special postmark).

Public Architecture in Hong Kong II  
香港公共建築II



套摺。  
Presentation Pack.

香港公共建築II  
Public Architecture in Hong Kong II



明信片 (一套六張)。  
Postcards (A set of six cards).

香港公共建築II  
Public Architecture in Hong Kong II



極限明信片 (一套六款)。  
Maximum cards (A set of six cards).