

# **Notice: Staines Amateur Regatta 2017: river restriction notice**

River Thames restriction information for Saturday 22 July 2017 from 9am to 6:30pm.

---

## **Press release: £13 million fund to increase England's woodland**

A £13 million fund to help landowners plant more trees to protect wildlife, boost the timber sector and reduce flood risk will soon open for applications, Forestry Minister Thérèse Coffey confirmed today.

Farmers, foresters and land managers across the UK will be able to apply for up to £6,800 per hectare to plant, weed and protect more trees when application forms for the next round of the government's Woodland Creation grant are made available in September.

The fund – part of the Countryside Stewardship scheme – will help plant more than 3 million trees, creating 1,900 hectares of new woodland and contributing to the government's ambition to plant 11 million trees, with a further one million in towns and cities.

Confirmation of the next round of funding came as Forestry Minister Thérèse Coffey met with some of the UK's leading forestry companies today to discuss the opportunities for the sector when we leave the EU.

Announcing the next round of funding, Forestry Minister Thérèse Coffey said:

Our forests and woodlands are vital for providing timber, improving the environment and protecting our wildlife.

Today's announcement demonstrates the government's ongoing commitment to the forestry sector and to biodiversity, which afforestation delivers. I hope to see as many applications as possible so this important industry can continue to thrive.

Guidance and application forms will be available in September, with the application window opening in January 2018.

A range of grants are available to support the creation of new woodland and sustainable woodland management, with Forestry Commission online advice

available on the application process.

#### Notes to editors

- The fund opens in January 2018 and the application forms and guidance will be available for download in September.
- Under the grant annual maintenance payments are available for 10 years.

---

## **Press release: £27million Northumberland flood scheme is complete**

The final part of Morpeth's £27million flood alleviation scheme is complete.

Work to construct Coting Burn dam was the last piece of work on the multi-million pound joint Environment Agency and Northumberland County Council flood scheme.

A drop-in event to thank residents for their patience throughout the construction took place on Friday 21 July.

Coting Burn dam has been renamed "The Hargreaves Dam" in memory of RFCC Chairman Jon Hargreaves, who sadly passed away in October last year.

The dam works alongside other flood protection measures to reduce flood risk to around 1,000 properties in Morpeth.



Cotting Burn dam aerial image

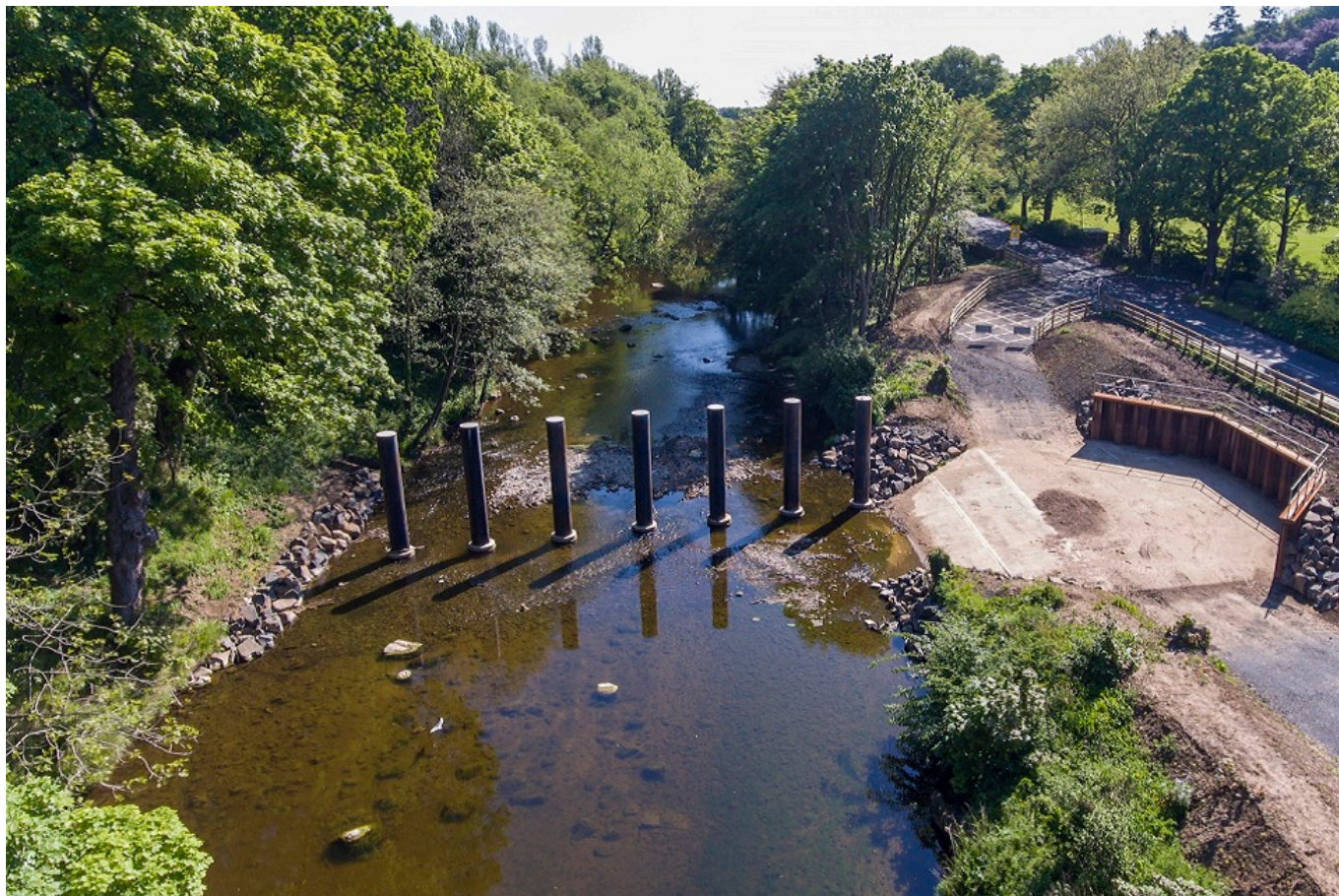
## **New defences**

To reduce the risk of flooding from the River Wansbeck, in-town defences were completed first, followed by the large upstream storage area at Mitford, which has already operated to protect the community. This year, tree poles were installed into the river near to Lowford Bridge to prevent large debris from reaching the town centre.

The construction of the new dam and storage area, which reduces the risk of flooding from the Cotting Burn, was finished in May and it is now operational.

It reduces the volume of water flowing downstream in large events. The screen on the dam also prevents debris from Cotting Wood from reaching the culvert and causing blockages.





Tree poles in the River Wansbeck

Separate work by Northumberland County Council to address surface water flooding at several locations in the town is underway and scheduled for completion by March 2018 at a cost of £1m.

This is being financed through a government grant from the Environment Agency and county council funding.

### **Scheme is 'biggest in the north east'**

The Environment Agency's Alan Cadas, Operations Manager in the North East, said:

The Morpeth flood scheme is the biggest in the North East and boasts one of the largest flood storage areas the Environment Agency has ever built.

But this work on the Cotting Burn is equally important and works together with the other features to ensure Morpeth is protected from both the burn and the River Wansbeck.

This has been a great partnership involving local residents, who have played, and continue to play, a vital role in the success of the scheme. It shows that by working together with others we can create long term solutions to reduce the risk of flooding in our communities.





The large dam at Mitford

## Partnership project

Northumberland County Council has played a key role, contributing £12million, making it one of the first schemes of this scale to be jointly delivered by partners.

Councillor Glen Sanderson, Northumberland County Council's Cabinet member for Environment and Local Services, said:

We're delighted this major joint scheme to protect the people of Morpeth is now complete.

This was a great example of agencies working together on a hugely ambitious engineering project and the fact it has already been used more than proves its worth.

One of the cornerstones of the scheme has been the help and support of the local community, and their input and engagement has been absolutely invaluable throughout.

It's important residents understand their flood risk and know what to do during a flood. For more information visit [the.gov.uk website](https://www.the.gov.uk)



---

## Press release: £27million Northumberland flood scheme is complete

The final part of Morpeth's £27million flood alleviation scheme is complete.

Work to construct Cotting Burn dam was the last piece of work on the multi-million pound joint Environment Agency and Northumberland County Council flood scheme.

A drop-in event to thank residents for their patience throughout the construction took place on Friday 21 July.

Cotting Burn dam has been renamed "The Hargreaves Dam" in memory of RFCC Chairman Jon Hargreaves, who sadly passed away in October last year.

The dam works alongside other flood protection measures to reduce flood risk to around 1,000 properties in Morpeth.



Cotting Burn dam aerial image

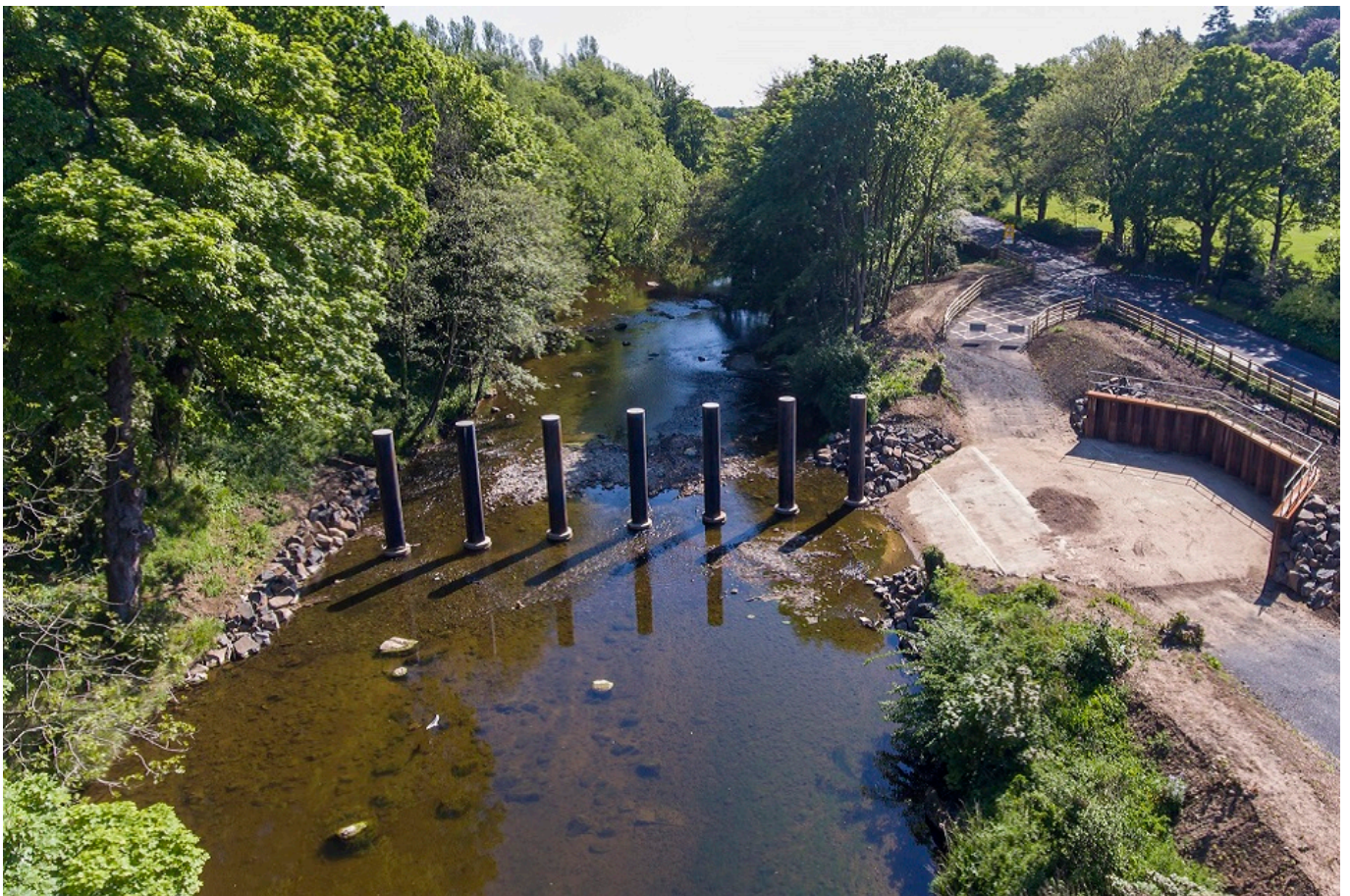


## New defences

To reduce the risk of flooding from the River Wansbeck, in-town defences were completed first, followed by the large upstream storage area at Mitford, which has already operated to protect the community. This year, tree poles were installed into the river near to Lowford Bridge to prevent large debris from reaching the town centre.

The construction of the new dam and storage area, which reduces the risk of flooding from the Coting Burn, was finished in May and it is now operational.

It reduces the volume of water flowing downstream in large events. The screen on the dam also prevents debris from Coting Wood from reaching the culvert and causing blockages.



Tree poles in the River Wansbeck

Separate work by Northumberland County Council to address surface water flooding at several locations in the town is underway and scheduled for completion by March 2018 at a cost of £1m.

This is being financed through a government grant from the Environment Agency and county council funding.

## Scheme is 'biggest in the north east'

The Environment Agency's Alan Cadas, Operations Manager in the North East, said:



The Morpeth flood scheme is the biggest in the North East and boasts one of the largest flood storage areas the Environment Agency has ever built.

But this work on the Coting Burn is equally important and works together with the other features to ensure Morpeth is protected from both the burn and the River Wansbeck.

This has been a great partnership involving local residents, who have played, and continue to play, a vital role in the success of the scheme. It shows that by working together with others we can create long term solutions to reduce the risk of flooding in our communities.



The large dam at Mitford

## **Partnership project**

Northumberland County Council has played a key role, contributing £12million, making it one of the first schemes of this scale to be jointly delivered by partners.

Councillor Glen Sanderson, Northumberland County Council's Cabinet member for Environment and Local Services, said:

We're delighted this major joint scheme to protect the people of Morpeth is now complete.



This was a great example of agencies working together on a hugely ambitious engineering project and the fact it has already been used more than proves its worth.

One of the cornerstones of the scheme has been the help and support of the local community, and their input and engagement has been absolutely invaluable throughout.

It's important residents understand their flood risk and know what to do during a flood. For more information visit [the gov.uk website](#)

---

## **Notice: BH20 5PF, Perenco UK Limited: environmental permit application advertisement**

The Environment Agency consults the public on certain applications for waste operations, mining waste operations, installations, water discharge and groundwater activities. The arrangements are explained in its [Public Participation Statement](#)

These notices explain:

- what the application is about
- where you can visit to see the application documents
- when you need to comment by

The Environment Agency will decide:

- whether to grant or refuse the application
- what conditions to include in the permit (if granted)