

# News story: September 2018 Transaction Data



NicoElNino/Shutterstock.com

In September:

- HM Land Registry completed more than 1,648,660 applications to change or query the Land Register
- the South East topped the table of regional applications with 377,136

HM Land Registry completed 1,648,666 applications in September compared with 1,746,974 in August and 1,586,987 last September, of which:

- 376,588 were applications for register updates compared with 393,233 in August
- 788,359 were applications for an official copy of a register compared with 838,122 in August
- 213,568 were search and hold queries (official searches) compared with 226,859 in August
- 22,838 were postal applications from non-account holders compared with 27,275 in August

## **Applications by region and country**

<b>Region/country</b>	<b>July applications</b>	<b>August applications</b>	<b>September applications</b>
South East	412,457	402,692	377,136
Greater London	342,764	327,388	310,343
North West	199,371	196,595	189,484
South West	175,922	173,062	158,954
West Midlands	153,247	149,801	141,033
Yorkshire and the Humber	138,612	135,462	129,227
East Midlands	129,991	125,704	118,340
North	84,004	82,370	76,485
Wales	81,079	81,297	77,032

<b>Region/country</b>	<b>July applications</b>	<b>August applications</b>	<b>September applications</b>
East Anglia	77,226	72,476	70,494
Isles of Scilly	109	52	56
England and Wales (not assigned)	73	75	82
<b>Total</b>	<b>1,794,855</b>	<b>1,746,974</b>	<b>1,648,666</b>

## Top 5 local authority areas

<b>Top 5 local authority areas</b>	<b>July applications</b>	<b>Top 5 local authority areas</b>	<b>August applications</b>	<b>Top 5 local authority areas</b>	<b>September applications</b>
Birmingham	27,538	Birmingham	26,892	Birmingham	26,138
City of Westminster	22,955	City of Westminster	23,912	City of Westminster	23,098
Leeds	21,258	Leeds	20,833	Leeds	20,393
Cornwall	18,581	Cornwall	18,367	Manchester	17,318
Manchester	18,026	Manchester	17,578	Cornwall	17,024

## Top 5 customers

<b>Top 5 customers</b>	<b>July applications</b>	<b>Top 5 customers</b>	<b>August applications</b>	<b>Top 5 customers</b>	<b>September applications</b>
Enact	55,674	Enact	56,544	Enact	50,715
Infotrack Limited	30,027	Infotrack Limited	30,749	Infotrack limited	34,155
O'Neill Patient	28,146	O'Neill Patient	27,267	O'Neill Patient	25,931
Optima Legal Services	26,763	Optima Legal Services	24,984	Optima Legal Services	23,915
TM Group (UK) Ltd	24,461	Eversheds LLP	20,019	TM Group (UK) Ltd	20,848

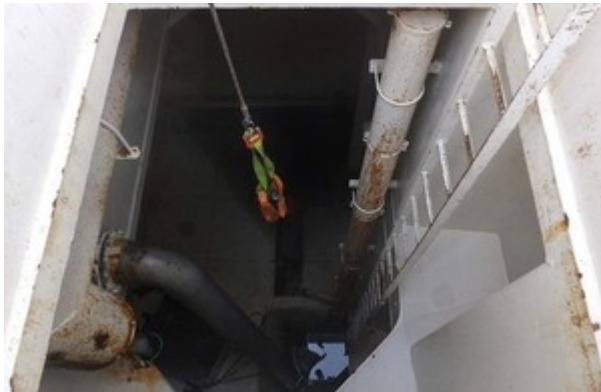
## Next publication

Transaction Data is published on the 15th working day of each month. The October Data will be published at 11am on Friday 21 November 2018.

Published 19 October 2018

---

## [News story: Safety Bulletin 4/2018 published](#)



The aft refrigerated salt water tank on fv Sunbeam

The MAIB has today issued a safety bulletin after working in a refrigerated salt water tank resulted in a fatal accident on board the fishing vessel Sunbeam (FR487) on 14 August 2018.

The bulletin contains details on the background of the incident, initial findings, safety lessons and recommendation, [read more](#).

A full report will be published when the investigation is complete.

Published 19 October 2018

---

## [Press release: Mercury's mysteries to be probed by British science](#)

BepiColombo is the first European Space Agency mission to Mercury, the least explored planet in the inner Solar System, and will provide new insight into how the planet closest to the Sun formed and evolved.

The spacecraft will travel 9 billion km taking 7 years to reach Mercury and is designed to survive extreme temperatures, from +450 to -180 degrees.

[BepiColombo: mission to Mercury](#)

Science Minister Sam Gyimah said:

As this mission to Mercury sails under the stars we can reflect on the features of UK science that have made it possible. It is a sign

of how far our space industry has come in exploring how much further humanity can go.

Much of the spacecraft was built right here in the UK by our growing space sector, employing nearly 40,000 people right across the country. Our modern Industrial Strategy is building an environment in which it will continue to thrive.

The mission is an outstanding example of international collaboration at the highest level between the European and Japanese space agencies. The UK's involvement is managed and funded by the UK Space Agency.

The UK's founding membership of ESA has given the UK a key role in this mission which will provide a unique science return and maintain the UK's position at the forefront of space exploration by investing in the technology. Every £1 invested in ESA results in a £1 share in contracts for UK companies and universities.

Dr Graham Turnock, Chief Executive of the UK Space Agency, said:

UK scientists, engineers and technicians have played a vital role in developing BepiColombo and the incredibly sophisticated set of scientific instruments on board. The international collaboration involved in this mission shows how our leading role in the European Space Agency is ensuring the UK thrives in the new space age, bringing real benefits to UK companies and scientists.

The UK's contribution to the mission:

- The UK Space Agency funded, and University of Leicester designed and built the Mercury Imaging X-ray Spectrometer (MIXS). This instrument will use novel X-ray optics to determine small-scale features on Mercury and find out what the planet's surface is made of.
- Airbus Defence and Space provided spacecraft structures, electrical and chemical propulsion systems and the systems which will separate the spacecraft modules on arrival at Mercury.
- QinetiQ supplied the innovative electric propulsion system. A beam of charged particles are expelled from the spacecraft to propel it forward. Ion propulsion produces low levels of thrust very efficiently compared with conventional chemical rockets.
- Thales Alenia Space UK supplied the Remote Interface Units that acquire sensor data and telemetry as well as driving the thrusters that control the spacecraft.
- UK teams also provided a hardware contribution to the Finnish led Solar Intensity X-ray & particle spectrometer (SIXS).

Emma Bunce, Professor of Planetary Plasma Physics at the University of Leicester said:

The University of Leicester technical and engineering team has dedicated many years of work to design, develop and build the Mercury Imaging X-ray Spectrometer (MIXS) instrument, in collaboration with multiple institutes and companies across Europe.

MIXS is designed to measure fluorescent X-ray photons from the surface of Mercury which will give us details of the elemental composition, and hence provide insight on the formation and evolution of the planet. MIXS will also explore how the charged particle environment interacts with the surface. The dual system of MIXS will allow a good global coverage of the planet using the efficient collimator (MIXS-C) design and will provide unprecedented detail of local-scale features using the first true imaging telescope (MIXS-T) for a planetary mission.

Peter Randall, Electric Propulsion Systems Engineer, QinetiQ, said:

QinetiQ has more than 50 years' experience of developing and testing electric propulsion systems and so we are delighted that our super-efficient T6 ion engines will play such a pivotal role in the seven year voyage to Mercury.

The new T6 ion thrusters have been designed to work for long periods in extremely hostile environments and, powered by solar energy, will enable the spacecraft to reach maximum speed with minimal fuel consumption. The ground-breaking development of these thrusters couldn't have resulted in a more thrilling project and we are proud to be the engine power behind the BepiColombo mission to Mercury.

Justin Byrne, Head of Earth Observation, Navigation and Science, Airbus UK said:

Building a spacecraft that needs to travel billions of km is quite a challenge – but we made it work with the comet chaser Rosetta, and BepiColombo is a worthy successor. All the Airbus teams in Stevenage and Portsmouth will join with their colleagues across the rest of Europe in making sure the launch goes according to plan

Key science objectives are to discover:

- The origin and evolution of a planet close to its parent star
- The planet's interior structure and composition
- Characteristics and origin of its internal magnetic field
- Surface processes, such as cratering, tectonics, polar deposits and volcanism

- The structure, composition, origin and dynamics of Mercury's exosphere
- The structure and dynamics of Mercury's magnetosphere
- Einstein's Theory of General Relativity (by making precise measurements of the spacecraft's orbit and position)

David Rothery, Professor of Planetary Geosciences at the Open University, said:

We really need to understand Mercury better. So much about it seems wrong for a planet that close to the Sun, so maybe it originated further out. A collision with the proto-Earth or proto-Venus could be what robbed it of so much of its original rock.

As a volcanologist though, one aspect that really impresses me about Mercury is all the volcanic explosion vents. They are spectacular evidence of violent eruptions, powered by escaping gas that recurred for much of the past four billion years.

The UK's space sector is going from strength to strength, employing around 40,000 people and carrying our world-class science while growing the economy. In 2016 the UK committed €1.4 billion across a range of ESA space programmes, leading European space research in telecommunications and Earth Observation, while providing cutting-edge capabilities in exploration.

This is all supported by the Government's [Industrial Strategy](#), with major initiatives such as the National Satellite Test Facility at Harwell and the development of a commercial spaceport in Sutherland, Scotland, which could be the first in mainland Europe.

BepiColombo will launch from Europe's spaceport in French Guiana at 02:45 UK time on Saturday (20th October). The spacecraft is named after Giuseppe (Bepi) Colombo (1920-84), an Italian mathematician and engineer, who studied Mercury's orbital motion.

---

## **News story: Availability of ESFA services: 20 October to 22 October 2018**

Following the planned maintenance over the weekend we can confirm that the following services are now back online:

- Data Collections Service (the Hub)
- Manage your education and skills funding (previously known as, Skills

Funding Service)

- Learning Records Service
- Apprenticeship Service
- National Careers Service

We have asked providers to submit their 2017 to 2018 final funding claims via the Data Collections Service by Monday 29 October. This deadline remains in place.

---

## **Press release: Life-changing tech industries and fabulous foods of Somerset are key to the UK economy, says Liz Truss**

Ahead of the Chancellor's Budget on 29 October, the Chief Secretary to the Treasury, Liz Truss, is visiting technology and agriculture businesses in Somerset.

Liz Truss has praised the output of Somerset businesses and revealed the south west is on pace for a record breaking year of exports.

Latest figures show that Somerset has already exported £10.5 billion worth of goods in the first half of 2018, up on the same period last year.

And since 2010 there are 115,000 more businesses in the south west, all helping to ensure the region has the lowest unemployment rate of any region in the UK.

Liz Truss said:

The diversity of businesses across Somerset is striking and it underlines the importance of this vibrant region.

From life-changing apps that help children learn maths, to world class food and drink, Somerset is a region that benefits Britons every day.

And it's also showcasing the best of Britain around the world too.

Exports from this area were worth more than £20 billion in 2017, up by 10 per cent on 2016, and we are supporting the ambitions of business to trade more in the future.

Since 2010 taxpayers in Somerset have benefitted from income tax changes, saving the typical taxpayer more than £1,000 a year, and the government's balanced economic approach means local hospitals in Somerset are receiving nearly £90 million to transform their buildings and services, and £10.5 million to improve mental health services for children and teenagers in North Somerset and North East Somerset.

And with fuel duty frozen for the ninth year in a row it means motorists will be able to continue to keep more of what they earn.

Motorists and businesses also benefit from road investment, including upgrades to the M49 near Bristol which will ease congestion and help support economic growth in the south west.