

Government *WORLD*TM

Winter 2011 Edition



...and in the morning there was peace... and it was good.

welters[®] Coribee *Mithril* in early morning winter mist.

welters[®]
ORGANISATION
WORLDWIDE



Contents

Water Management Solutions	page 1	Burial chambers and Memorials	page 10	Chapel Tiber Mausoleum	page 21
Orb Memorials	page 2	welters® Furniture	pages 12 & 13	Making problem solving an art form.....	page 22
Rememberland website	page 3	Cremated Remains Products.....	pages 14&15	Manual Handling Compliance	page 23
Agricultural Connections	page 4	Product info for Funeral Directors	page 16	Information for Tenders	page 24
Galloway Cattle Heritage herd	page 5	Above and Below Ground Burials	page 17	Unstable Land Solutions	page 25
Brookwood Cemetery Lake restoration	page 6	Mausolea Charging Bier	page 18		
Environmental Responsibility	page 7	Pathway Recycling	page 19		
Single Burial Chambers	pages 8 & 9	From design to reality	page 20		

Whilst every effort has been made to ensure the accuracy of all articles, advertisements and other insertions in this publication, the publisher can accept no responsibility for any errors or omissions or incorrect insertions. The views of the contributors are not necessarily those of the publisher or the advertisers. The publisher makes no warranties, claims or guarantees in regard to accuracy, completeness or currency of information and cannot accept any liability resulting from the use or misuse of any such information. The Publisher does not accept responsibility for mistakes, be they editorial or typographical, nor for consequences resulting from them.

welters®

ORGANISATION

WORLDWIDE

Visit us on-line at
government-world.com

Advertising | Articles | News |
Letters | Editorials

welters organisation

P.O. Box 159 Carlisle, Great Britain CA2 5BG

Office: 08702 400915 (national rate)

Fax: 01228 674959

E-mail: office@government-world.com

Submissions should be sent to **Government WORLD**,
PO Box 159, Carlisle, CA2 5BG Tel: 08702 400915 Fax:
01228 674 959 Email: gov.world@welters-worldwide.com

ISSN 1744-6996

Corribee Cover picture

Renowned for their good sea keeping ability, Corribee sailing yachts are vessels of choice for many an adventurer, perhaps most famously used by record breaking sailor Ellen MacArthur on her circumnavigation of Great Britain via the Caledonian canal in her Corribee, Iduna in 1995.

As well as the turbulent seas off the British Isles, the yacht is also at home on the level waters of our great British lakes. The quiet propulsion of the mainsail providing wildlife vantage points where no motor powered boat could ever hope to achieve and there's nothing better after the challenges of the working day than to slice the clear waters of a Scottish Loch and put the **welters®** Corribee through her paces.

welters[®]

ORGANISATION WORLDWIDE

Design and Innovation



Water Management Solutions

There is little more satisfying than to carefully embrace nature's landscape in a way which further enhances its beauty and ecological function.

Illustrated here are beautiful, now mature, views of areas of wetland inhabited by a broad canvas of wildlife and facilitating immense eco diversity. These were created from barren hill land and are now owned by Forest Enterprise.

welters[®] passion to sensitively manage water into areas required for ecological, aesthetic or commercial reasons is as challenging as the projects that necessitate the removal and redistribution of water from areas where it is not desired.

This most challenging relationship between the magnificence of nature and solution development through enterprise and technology is clearly demonstrated in sub terrain system solutions commonly utilised in cemetery development and being feasible in waterlogged, unstable or contaminated land.

Riverstone Cremated Remains Orb Memorials



welters®

ORGANISATION WORLDWIDE

Design and Innovation



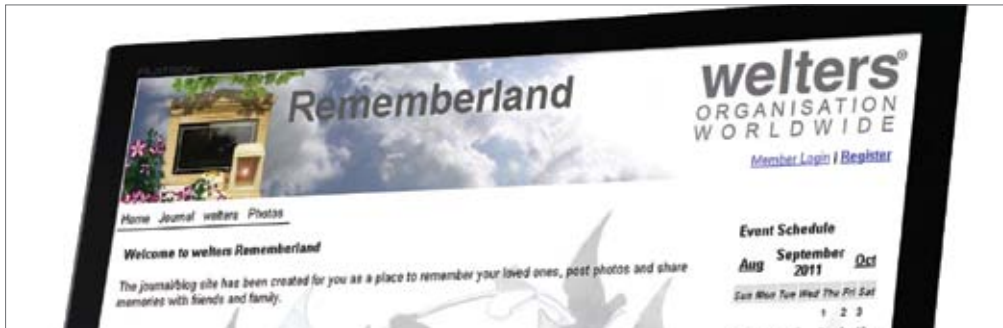
welters® *Virtual Memorial Website*

A place for the bereaved to store and share memories of their loved ones both living and deceased.

welters® are developing a content management system with private areas where members can upload and store photographs, record memories in a journal/blog and share with friends and family.

The site will be made available via a personal log-in to all families arranging interments in **welters®** systems and will initially contain details of the deceased and a photograph of their memorial which will provide the main focal point for first entries.

It is intended that the site will then be expanded to include wider memories and anniversaries important to the owner.





welters[®]

ORGANISATION
WORLDWIDE
Design and Innovation



Agricultural Connections


welters[®] have over many years owned a closed breeding herd of **welters[®]** Heritage pedigree Galloway livestock.

As part of **welters[®]** environmental programme and operations the leading pedigree herd is at home in Cumbria and the Borders

The majority of heifer calves are retained for breeding within the herd development programme.

Images show a herd selection on a **welters[®]** Cumbrian fell.

welters® Galloway Cattle Heritage Herd

A photograph of a herd of Galloway cattle in a grassy field. The cattle are dark-colored with thick, wavy coats. They are standing in a line, facing the camera. The background shows a line of trees and a fence.

The Galloway is one of the oldest and purest of our native cattle breeds and will produce an excellent beefy calf, which is in great demand by people wanting highest quality, natural grown beef.

At the 2009 Royal Highland show, the Galloways won all the major trophies including the individual, native interbreed and pairs competitions.

welters® have now introduced this hardy pedigree breed to their lands on the Scottish Borders and Cumbria.

The herd not only produces highly succulent and flavoursome beef, they also provide great environmental advantages for the land they graze upon due to their unselective grazing action. This grazing action improves the natural herbage for domestic stock, wildlife,

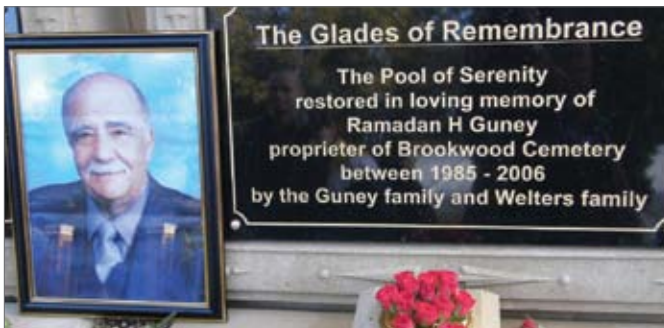
and game through the removal of excess roughage.

Galloways are becoming increasingly popular for controlling weeds, rushes and purple moor grasses on hill land, where sheep no longer graze.



welters[®]

ORGANISATION
WORLDWIDE
Design and Innovation



Historic Brookwood Cemetery Glades of Remembrance Lake Restoration

After being without water for 20 years, **welters[®]** team of experts embark on extensive structural repairs to the memorial lake bed and water feature pumping system.



The completion of the lake was commemorated with an open day celebration where the lake was restocked with fish and a plaque dedicated to the memory of the former cemetery proprietor Ramadan H Guney was unveiled.

The Mayor of Woking was in attendance and the lake was blessed by Archimandrite Alexis of the St Edward Brotherhood.

welters®

ORGANISATION
WORLDWIDE
Design and Innovation

Environmental Responsibility

The challenges of managing a nationwide network of services can be considerable for companies with a conscience towards low environmental operational impact.

welters® environmental management, control activity with minimum effect whilst also providing an offset mechanism with the introduction of ongoing tree planting schemes.

The UK needs trees - Since 1930 nearly half of our ancient woodland has been lost.

Native birds, butterflies, insects and plants all depend on our woodland systems to survive. Trees provide shade, cut down on noise and reduce airborne pollution.

The **welters®** organisation management plan, going forward is specific in that it deems its contribution to planet improvement exceeds the normal preferential focus and common trading practice.

As such, from Autumn 2012, the organisation will plant 2 trees for every 1 tonne of material supplied as an offset to operational carbon footprint.





welters[®]
ORGANISATION
WORLDWIDE
Design and Innovation



Single Burial Chambers

***Terraced burial chamber section
design manufacture and installation.***

The installation maintains use of very difficult ground conditions utilising terraced sections set within very steep gradients.

The area was finished in top soil and seeded for lawn type memorial specifications.

welters[®]

ORGANISATION
WORLDWIDE
Design and Innovation



Single Burial Chambers

Terraced burial chamber section design manufacture and installation.

Artist's impression of terraced installations complete with memorials and planter frames.



welters®

ORGANISATION WORLDWIDE

Design and Innovation

Burial Chambers and Memorials

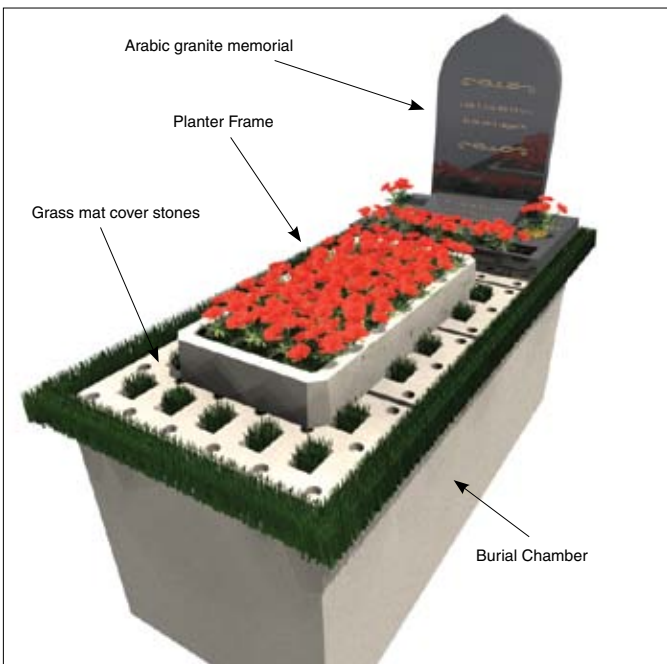
welters® are the leading manufacturer of burial chambers in the UK, providing installation and memorial design services for Muslim communities nationwide for nearly twenty years.

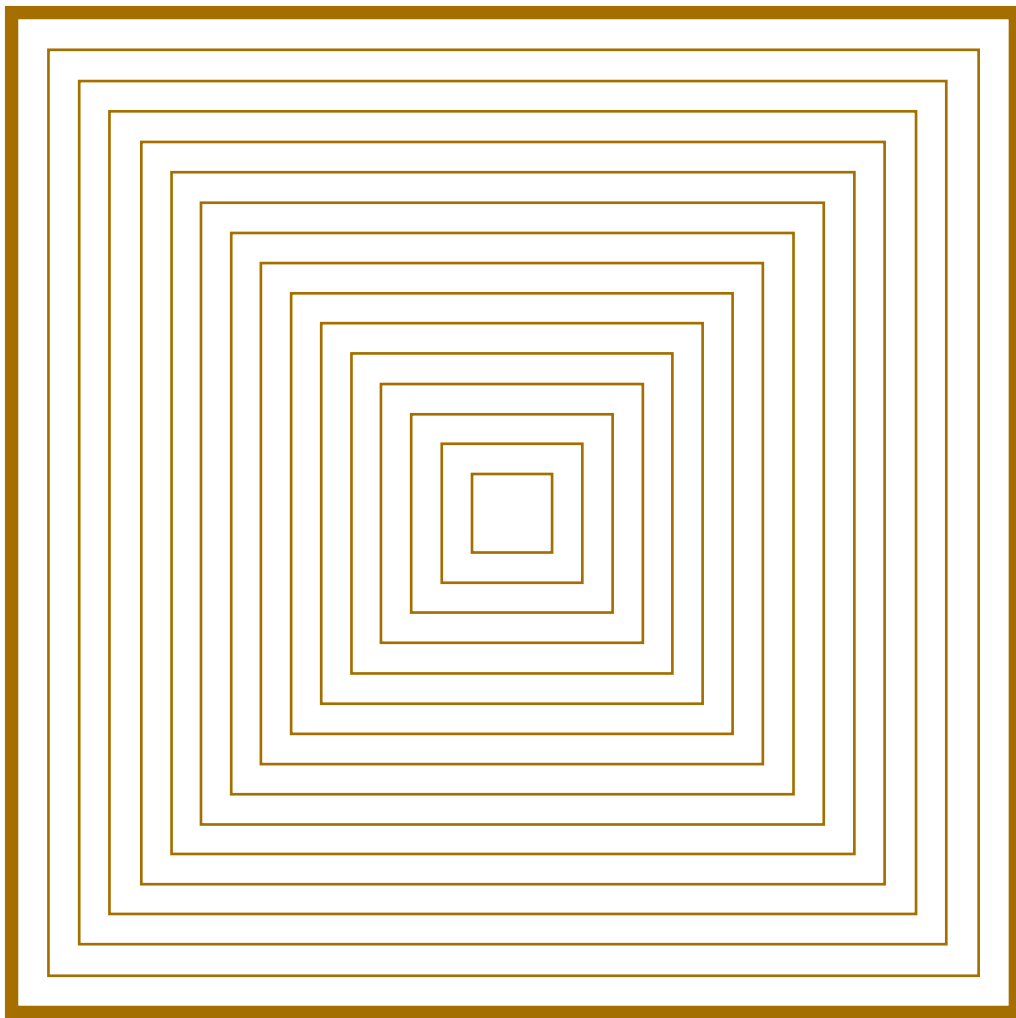
The burial chamber is made from reinforced concrete to exceed LACO requirements and can accept a single interment.

The chambers can be installed close together or further apart and with or without a base so the coffin is in contact with the soil which is sometimes preferred.

welters® have a range of headstones designed specifically for their burial chambers, providing an attractive, safe and secure form of remembrance. Optional planter frames and grass mat covers are available.

Please contact **welters®** for further information and we will be pleased to advise further about this important service





welters®

keith@welters-worldwide.com

A brief journey through time

welters have been manufacturing furniture since the late 19th Century producing classical Victorian and Edwardian Art styling and Art Deco designs.

Always the contemporary, the company reflected the evolving styles and attitudes through the decades.

As new materials became available, the company was at the forefront of technical advancement, pushing the boundaries with new designs and manufacturing techniques



HEIGHT 5'7"
WIDTH 4'0"
DEPTH ON UPPER CARCASE 1'0"
3 PLATE GLASS SHELVES 7/4/37

R101

E 3223 N 406
3 3 37



long 3'0" high 1'8" deep
(1'6" 1'6" 1'6")



7 98



7 95

E 2372
1.5.30





Retro is the new modern

Retro furniture still looks fantastic in a modern home and it is a trend that is becoming very popular amongst style conscious interior designers who are rediscovering the classic designs of the past. Combining modern and retro pieces can create beautiful new aesthetics in home decoration which has not gone unnoticed at welters HQ.

As an established furniture designer and manufacturer throughout past eras, welters furniture back catalogue clearly illustrates the highly skilled craftsmanship and contemporary design that really captured the mood of the time.

welters are now revisiting selected pieces of this classic furniture. There will be some great new designs, as well as some fantastic pieces from the past . Modern and retro going hand in hand.





Basillica II



Desk Kerbs



Memorial Orbs



Book Memorial



Standard kerb set



450 Desktop

welters®

ORGANISATION WORLDWIDE

Design and Innovation

Support British Industry

welters® stone products are designed, manufactured or finished in their UK factory to the highest standards and cater for all requirements. From niche wall to memorial kerb and every bespoke requirement in-between, **welters®** has the expertise to provide the complete service.

Project Tendering Notification

welters® will tender for or provide quotations for all your memorial procurement needs. In all instances, please notify procurement@welters-worldwide.com

Cremated Remains Products

welters® manufacture a wide range of granite cremated remains products for above and below ground interment and commemoration, all at very competitive prices. The Memorial Book memorial has provision for 208 memorial plaques and offers a high revenue return within a small footprint.

Visit us at www.welters-worldwide.com



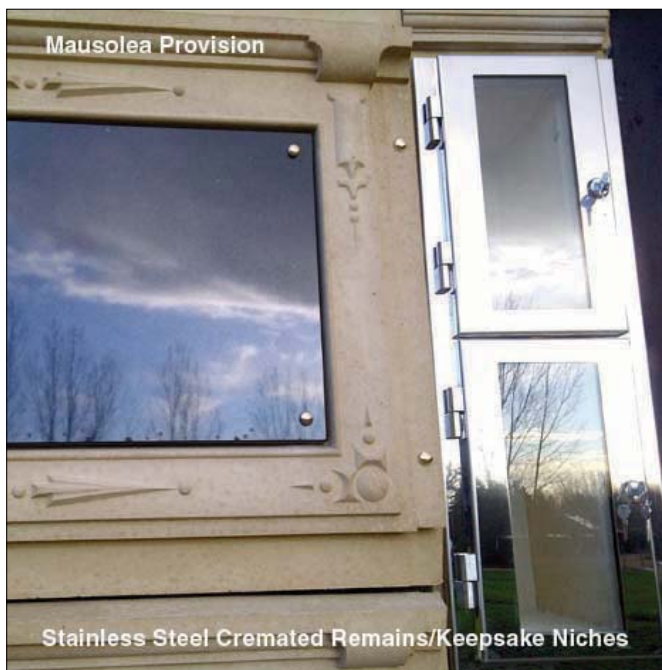
Basilica Granite Cremated Remains Systems



Granite Basilica Cremated Remains System

welters®

ORGANISATION
WORLDWIDE
Design and Innovation



Mausolea Provision

Stainless Steel Cremated Remains/Keepsake Niches



Granite Desktop Cremated Remains System

Cremated Remains Products

welters® manufacture a wide range of cremated remains products for above and below ground interment including Niches, Basilicas, Desktops, Kerb sets, internal and external designs at very competitive prices.

Specialists in Government Services

welters® have a nationwide reputation for providing specialist product design services and consultation within the bereavement sector.

Their success has been built over 25 years of experience providing high calibre practical solutions for a wide client base across the UK, Europe and beyond.



Chamber delivery and full installation by **welters** own fully trained teams ready for funeral



Interment preparation and sealing up on the day of funeral by **welters** fully trained teams.



Full in house memorial and cladding design, supply and fitting completion by **welters** fully trained teams.



welters[®]

ORGANISATION WORLDWIDE Design and Innovation

welters[®] product info for Funeral Directors

Did you know we provide interment and memorial products to Funeral Directors nationwide?

Burial Chambers for Private Purchase

Meet the needs of the bereaved in the provision of burial chambers in existing privately purchased graves. **welters[®]** one piece specialist and burial chamber casting is the most widely accepted and affordable alternative to traditional brick grave lined vaulted graves. Available in a range of sizes and depths.

welters[®] can provide the complete in-house design, supply and install service, including full training for operatives which also includes our own internal team of 24hr interment specialists.

Visit us at www.welters-worldwide.com

welters®

ORGANISATION
WORLDWIDE
Design and Innovation



Solutions for Above and Below Ground Burials

A large scale ongoing mausolea and burial chamber complex providing many years of interment provision.

welters® community Bora style mausolea with its minimalist design creates an affordable opportunity for mausolea interment.

Burial chambers also provide a choice of above and below ground burial. The exposed chamber sections are clad in granite to provide substantial memorial choice.

A private, family mausolea area has also been created with four interment free standing structures have been installed.



welters®

ORGANISATION
WORLDWIDE
Design and Innovation



welters® Support Services

Specialist Mausolea Charging Bier for interment service

As part of the Continuous Care programme and 24/7 interment support service **welters®** have manufactured a purpose built transportable charging bier which is now provided for mausolea interments.

The bier provides a dignified catafalque for the coffin during the committal service and is fitted with rollers to assist ease of charging into the mausolea cell.



welters®

ORGANISATION
WORLDWIDE
Design and Innovation

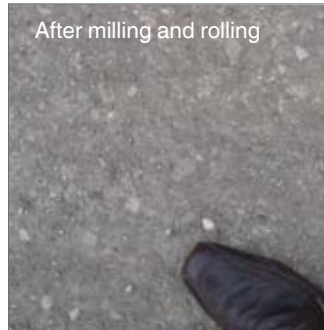


Pathway Recycling

Before milling



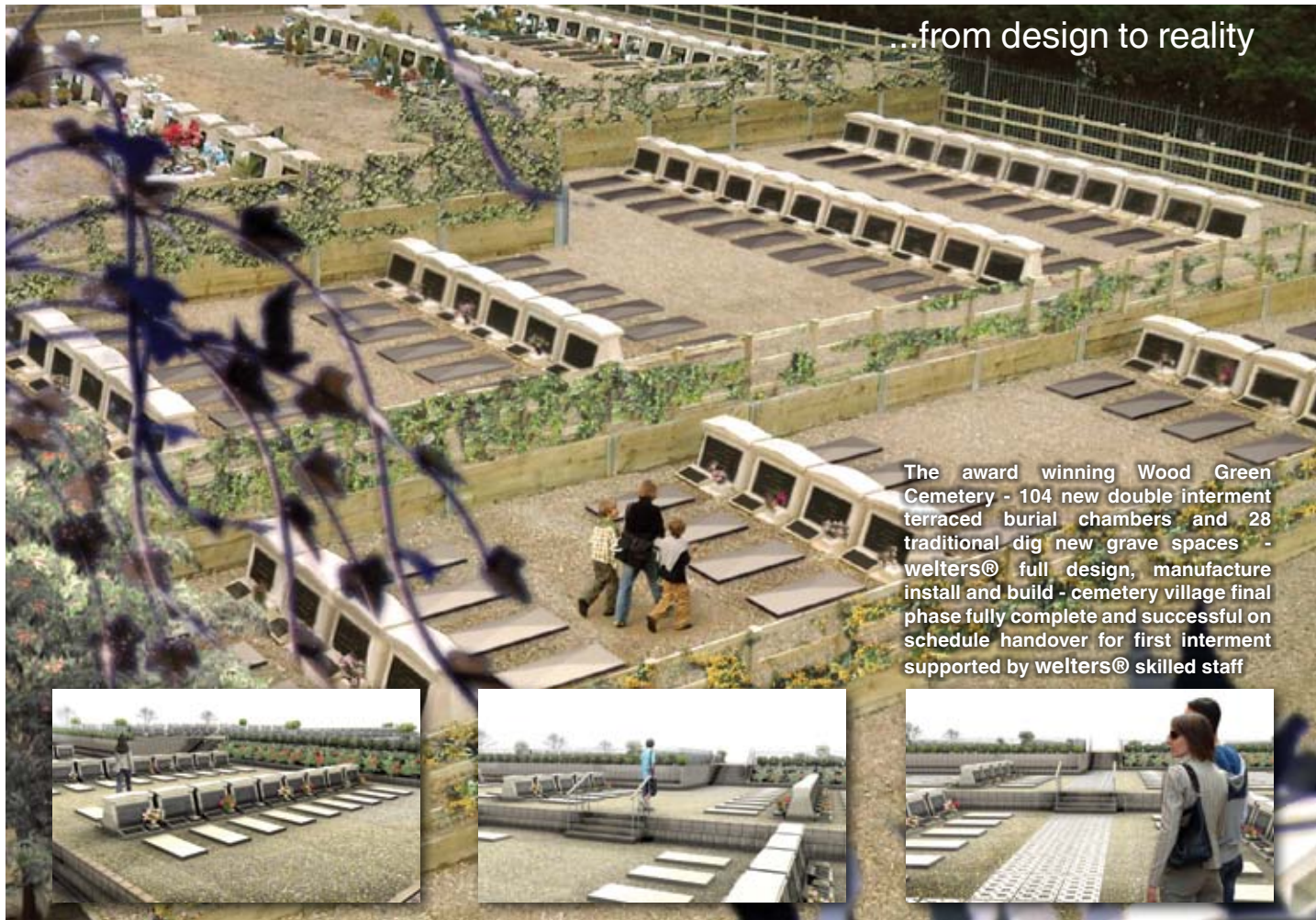
After milling and rolling



welters® cemetery pathway Asphalt Zipper recycling techniques pulverise existing tarmac and gravel pathways into high grade material that can be compacted in-situ to be reused either as a stabilised base for surfacing with tarmac or as a rejuvenated gravel pathway.

This process is perfect for degraded, pot holed and root damaged cemetery roads and pathways.

...from design to reality



The award winning Wood Green Cemetery - 104 new double interment terraced burial chambers and 28 traditional dig new grave spaces - welters® full design, manufacture install and build - cemetery village final phase fully complete and successful on schedule handover for first interment supported by welters® skilled staff



The Chapel Tiber Mausoleum

6 interment side charging family mausoleum.



Secure and private family interment granite structure providing a dignified and comforting solution for interment and on-going remembrance.



welters®

ORGANISATION
WORLDWIDE
Design and Innovation

Making problem solving an art form

welters® provide a full 'in house' design and comprehensive architectural business solution specifically developed for your individual requirement for below and above ground.

To ensure that schemes are operationally viable, aesthetically inspiring, culturally sensitive, cost effective and sustainable **welters®** have developed their ability to provide a vast fixed price "menu" of interment, memorialisation options, furniture, scheme features and finishes.

Necessity being the mother of all invention dictates our development programme. With each new project sees the birth of new above and below ground systems, procedures and beautiful inspiring artwork features - each requirement has at least one or more elements that require a different solution. If **welters®** can think of it **welters®** can make it for you!



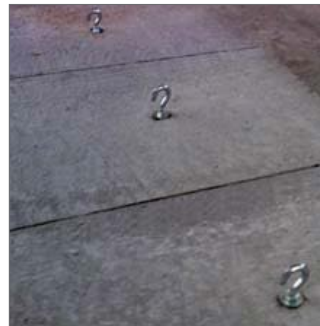
Following consultation, **welters®** is able to specify to the client the ability to create the **Cemetery Village™** brand within your own environment. Utilising **welters®** unique manufacturing ability here in the UK, providing the critical flexibility and controls essential to the viability and ultimate success of each project.

This service is backed up by their full in house specialist installation and support services for this specialist market which includes inscriptions, training, interment, management and maintenance all carried out by our own fully employed and trained staff.



welters®

ORGANISATION
WORLDWIDE
Design and Innovation



Manual Handling Compliance

Optional manual handling aid solutions for top lids and internal interim slats

welters® 8 part interlocking lids sets are designed to be capable of handling by two people.

If required, at an additional cost, lifting hooks can be inserted into the lids.

A lifting bar can be supplied that will slot in to the hooks to aid lifting.

Price on application.

Information for Tenders and Procurement

We are the largest and demonstrably most experienced single specialist manufacturer and installer of burial chamber and Mausoleum systems in the UK, with over 20 years of specialist experience to the industry, we believe we can offer you overall unrivalled cost, specification and service advantages.

We can also offer you full cemetery design, manufacture and install proposals for any memorial and interment service option provision in respect of full body and cremated remains interment, above or below ground to any specification.

Although many councils are now using online tender portals, many of which we are registered with, we would like to ensure that we miss no opportunity in making sure all council procurement departments are at least aware of who we are and what we can offer.

If your procedures allow, we would request that if you are purchasing any future systems for memorialisation and/or interment, that we be included in the procurement and requisition process in order that we may forward our proposals to achieve the best results for you. This can also include **welters®** financed options on a 'pay as you go' strategy, and our professional support in helping you with your overall forward cemetery management strategy as part of our professional package.

We are servicing Local Authorities nationwide and are well placed to offer you excellent value locally.

We look forward to receiving tender opportunities and to being of assistance to you in the future.

welters®

Tel: 08702 416 422

admin@welters-worldwide.com

www.welters-worldwide.com

welters®
ORGANISATION
WORLDWIDE
Design and Innovation

Recent changes in the procurement policy of many Local Authorities means that the onus is on our company to ensure we are registered with the relevant 'eTender' website.

welters® do not want to miss any tender opportunities so please contact us so we can make sure we are correctly registered with your eTender portal.

welters®

ORGANISATION
WORLDWIDE
Design and Innovation



Providing the Solutions

welters® as a company, are familiar with working within the industrial and natural environment.

Examples depicted include:

- Creating beautiful areas of water where they didn't exist before.
- Working with technology to install drainage systems to take water away from where it isn't wanted.
- Construction of foundation piling in wet and destabilised land.
- Subterranean installation of foundation rafts and piling.



