

Church of England should enter into the 'Spirit'

The Church of England is in the most fortunate position of being able to hand over certain management and maintenance responsibilities to Local Authorities and therefore to the tax payer in respect of Churchyards which it deems to be 'closed'. These are generally closed for burial but normally open to the public for visitation or access.

The Local Authority is controlled by Health and Safety Legislation to risk assess and respond under controlled criteria and yet the 'Church' through its own lawful instruments can refuse, delay or condition a 'faculty' which the Local Authority must apply for in causation of its work programme.

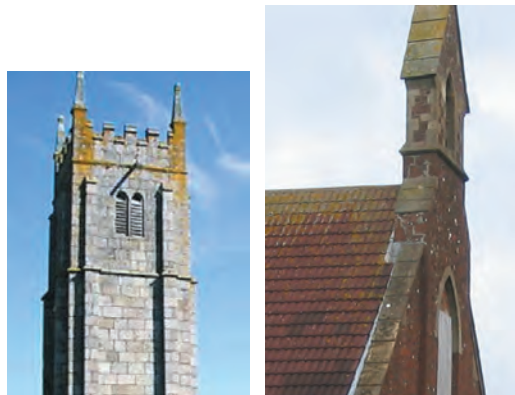
Diocesan Chancellors are delaying response and decision making. In some cases, Chancellors are requesting that the Local Authority liaise with individual incumbents,

all of which will have differing opinions, requirements and interest or otherwise in proper and expeditious resolution of the project in hand. The increased burden of cost to the tax payer is unacceptable and the risk of accident substantially increased.

The Church, one would have thought, would be extremely appreciative of the fact that it does not have to care for and pay for the cost of its own Burial ground and enter into a 'Spirit' of co-operation which all those who are working hard to do that which is appropriate and lawful.

The interference with a Health and Safety process is a criminal offence.

Comments to churchofengland-churchyards@welters-worldwide.com



Environmental Issues



welters Environmental pledge to
all Cemetery Village[®] participants

- free tree planting and brown trout fish

stocking in Scottish Borders and Cumbria

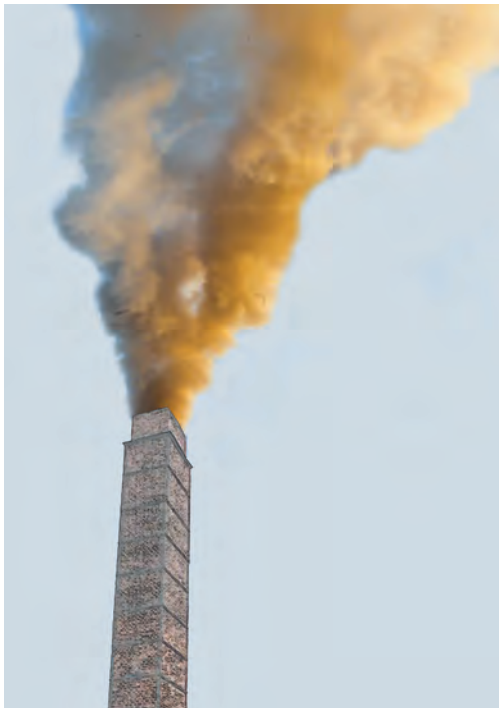
together with complimentary Virtual Cemetery[®] commemoration membership

enquiries to environmental@welters-worldwide.com

Environmental Issues

Government Departments are exploring issues effecting Environmental Pollution from a wide variety of standpoints with Increasing vigor.

The Burial and Cremation Industry is now examining the effect of cremator emissions generally as opposed to particular and specific elements of discharge. Equally, Earthen Burial and its effect on ground water pollution has become more and more concerning with the changing patterns of rainfall, flash flooding, water retention and other linked trend shifts now associated with climate change.



Example of tragic procedure

welters organisation worldwide has over many years developed Interment Systems for Burial and Commemoration throughout the **welters** Cemetery Village® programme which avoid pollution, adequately resolve land use issues whilst achieving absolute 'customer' focus which seems to be omitted from thought process and considerations by the majority of industry professionals.

The Cemetery Village® provisions whilst achieving each and every requisite Environmental Advancement also provides management and maintenance opportunity procedures which run as near as possible to zero cost whilst fulfilling Health and Safety solutions previously considered unattainable.

Quite dramatically, all the efficiency achieved in the environmental engineering of operational solution

The Ancient Sessile Oaks of Whithaugh



welters organisation worldwide, the creators of the **welters** Cemetery Village® Systems which embrace the best use of land and environmentally sensitive solutions for full body burial and cremated remains interment, now announce their most progressive commitment to global environmentalism yet.

Not only will **welters** maintain free of charge a commemorative register and password protected virtual cemetery for 'rights owner' use but **welters** make an absolute

commitment to plant and maintain one tree for every 'burial rights owner' or deceased from at maximum 6 months following the date of interment into a **welters** facility or registration which ever is the later.

Tree planting schemes are currently in the Scottish Borders and Cumbria.



In addition to the commitment to plant the renewable tree resource, **welters** will also, at no cost to the rights owner, stock the burns and becks within the tree planting scheme areas with Brown trout smolt and parr thus protecting this most important British indigenous species.

