

Contents

welters *world* - a **Government WORLD** supplement

Commitment to the Industry	2
Furniture Design	3
welters windsor chair	6
Chiltern Stone and Timber Bench	12
Chiltern Stone and Granite Bench	13
Fabric Design - Naturally	14
Agriculture and the Environment	15
Nature and Technology	18
Bereavement Services	20
Cemetery Village™ Phasing	21
Interment Support Services	22
Majestic Memorial Mausolea	23
Stone Memorial Orbs	24
Woodland Memorial Orbs	25
Major contract award	26
Inscription Services	28
Manufacturing	29

Whilst every effort has been made to ensure the accuracy of all articles, advertisements and other insertions in this publication, the publisher can accept no responsibility for any errors or omissions or incorrect insertions. The views of the contributors are not necessarily those of the publisher or the advertisers. The publisher makes no warranties, claims or guarantees in regard to accuracy, completeness or currency of information and cannot accept any liability resulting from the use or misuse of any such information. The Publisher does not accept responsibility for mistakes, be they editorial or typographical, nor for consequences resulting from them.

welters[®]
ORGANISATION
WORLDWIDE

Visit us on-line at
government-world.com

Advertising | Articles | News |
Letters | Editorials

welters organisation

P.O. Box 159 Carlisle, Great Britain CA2 5BG

Office: 08702 416 422

Fax: 01228 674 959

E-mail: office@government-world.com

Submissions should be sent to **Government WORLD**,
PO Box 159, Carlisle, CA2 5BG
Tel: 08702 416 422 Fax: 01228 674 959
Email: submissions@government-world.com

ISSN 1744-6996



Cover picture:
Acrylic furniture



The Furniture Makers' Company the furnishing industry's charity

welters®

ORGANISATION
WORLDWIDE
Design and Innovation

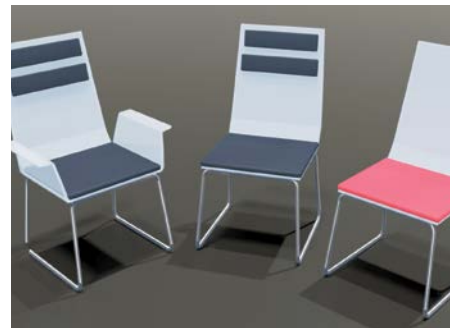
Commitment to the Industry

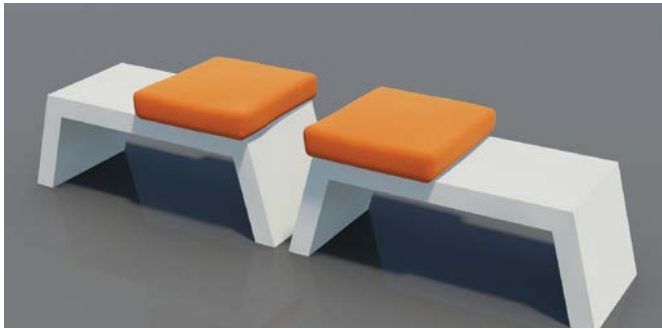
Keith Welters has for many years supported and contributed to the furniture manufacturing industry. Most notably this has been achieved through his long-standing involvement with the Worshipful Company of Furniture Makers as a liveryman, offering his expertise and experience to both students entering the trade and to existing members and fellow furniture makers.



Furniture Makers Hall, London

Furniture Design

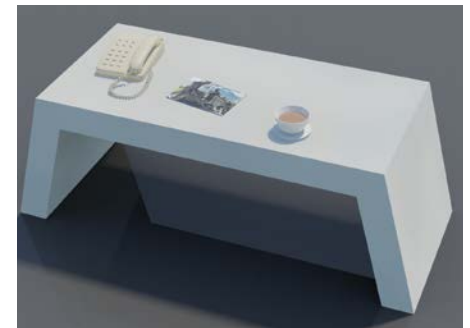




Furniture Design

The latest production of design sets combine modern styling with multiple material options for manufacture.

Stone features predominately and forms a central part of the ethos to produce a range of designs for indoor and outdoor use across the public, domestic and private market demographic.





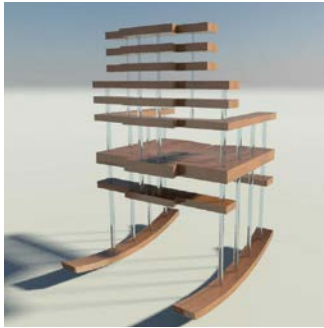
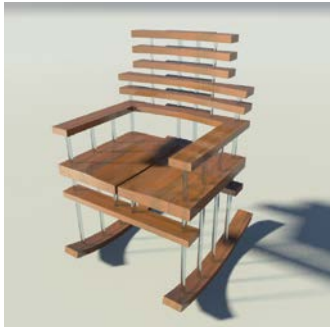
Furniture Design

Throughout generations, **welters®** skills and craftsmanship have been continually reflected in the design and manufacture of fine furniture.

Keith Welters is a member of the Worshipful Company of Furniture Makers.

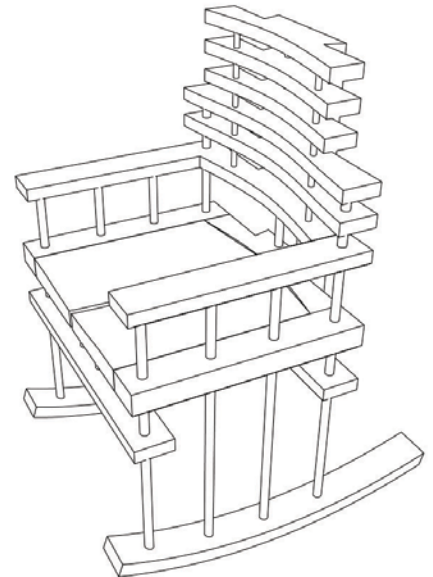
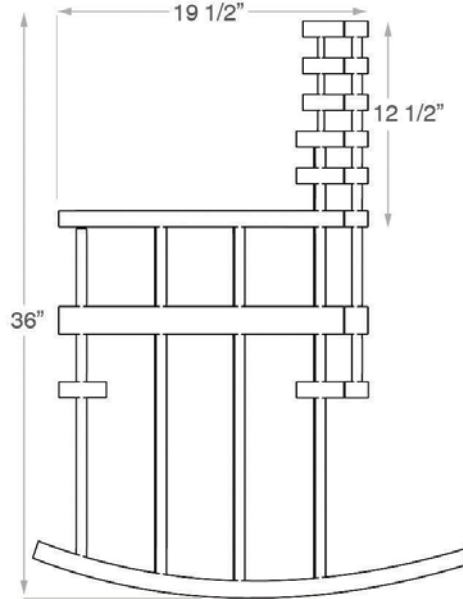
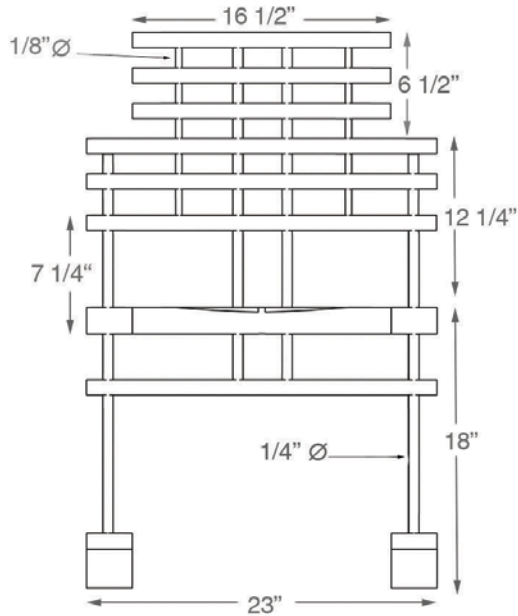
WOW are members of the British Furniture Manufacturers Association (BFM)





welters®
ORGANISATION
WORLDWIDE
Design and Innovation

welters windsor chair





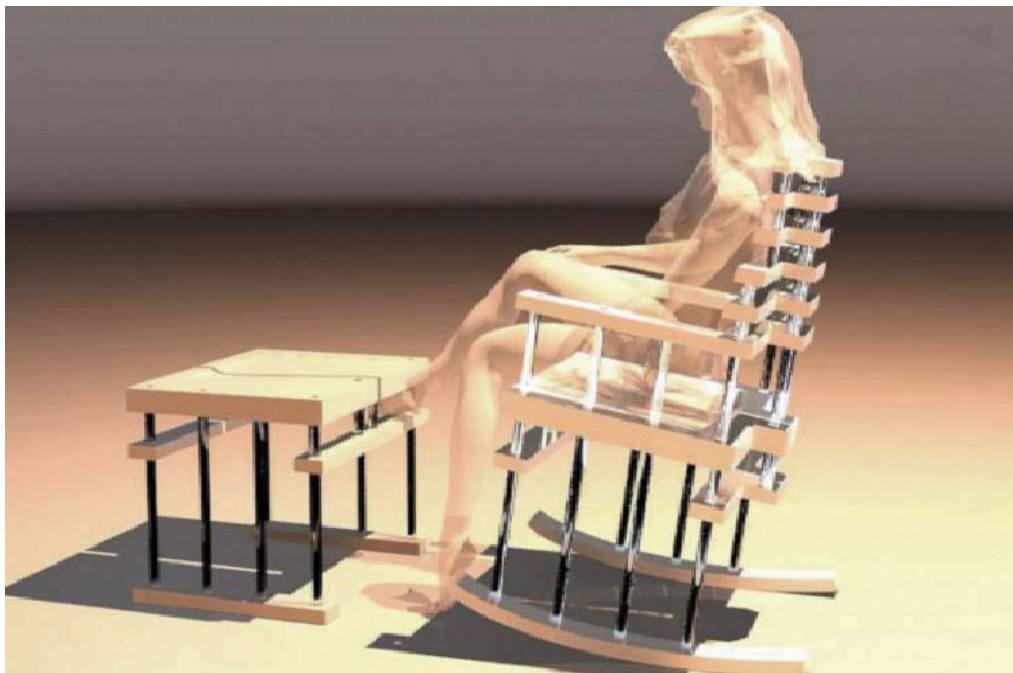
welters[®]

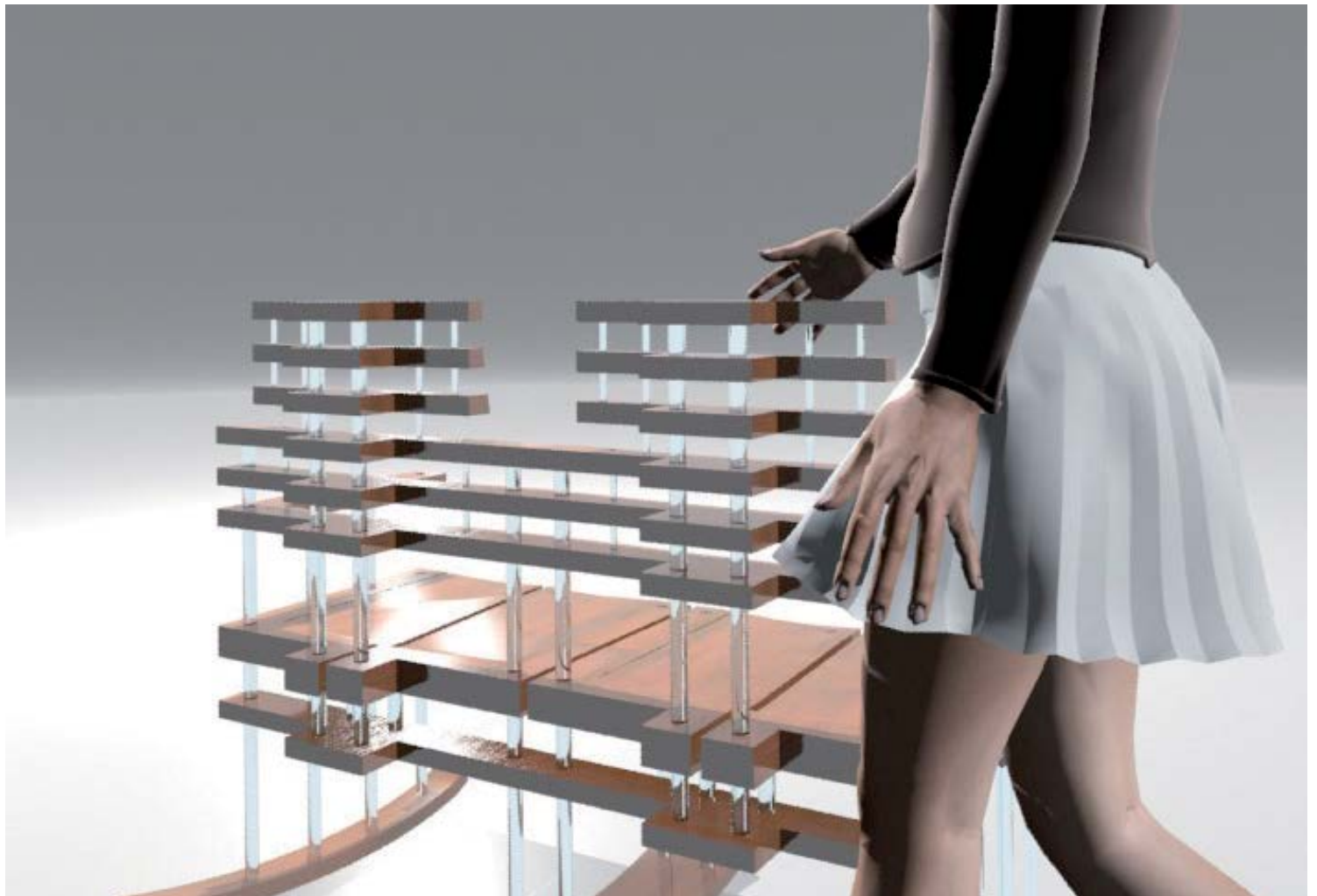
ORGANISATION WORLDWIDE

Design and Innovation

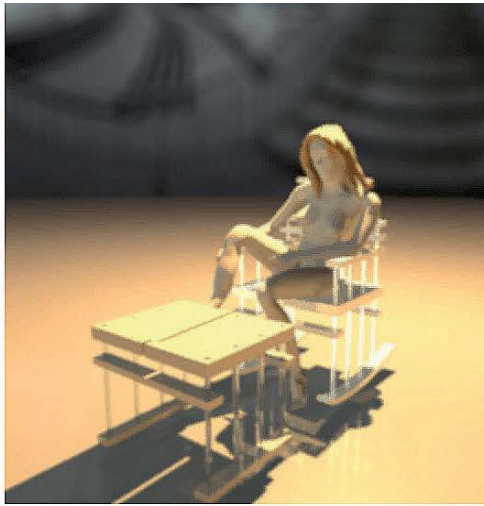
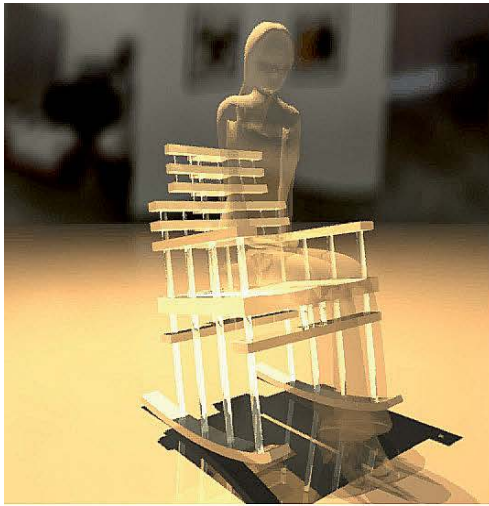
welters-windsors Chair Range

The company is celebrating its return to the 'of the moment' Windsor Chair production through the innovative interpretation of manufacturing styles and materials in a comprehensive and all embracing range of furniture elements.













Module 1



Module 2



Module 3

Chiltern Stone and Timber Bench

The new Chiltern Timber Memorial Bench is now available in a range of five modules that include memorial plaques and cremation niches.

The bench is manufactured using sustainable resources and replenishable stock and is marketed as both a memorial bench and street furniture item.



Module 4



Module 5



Chiltern Stone and Granite Bench

The **welters**® Chiltern Memorial Bench provides a range of affordable solutions for commemorative and memorial seating arrangements.

The memorial bench collection includes a range of options beginning with the standard bench and plinth arrangement with two inscription plaques. Upgraded versions include end planters and extended base plinth.





welters[®]

ORGANISATION
WORLDWIDE
Design and Innovation
**Fabric Design -
Naturally**





welters®

ORGANISATION WORLDWIDE

Design and Innovation

Agriculture and the Environment

Heritage Galloway Herd

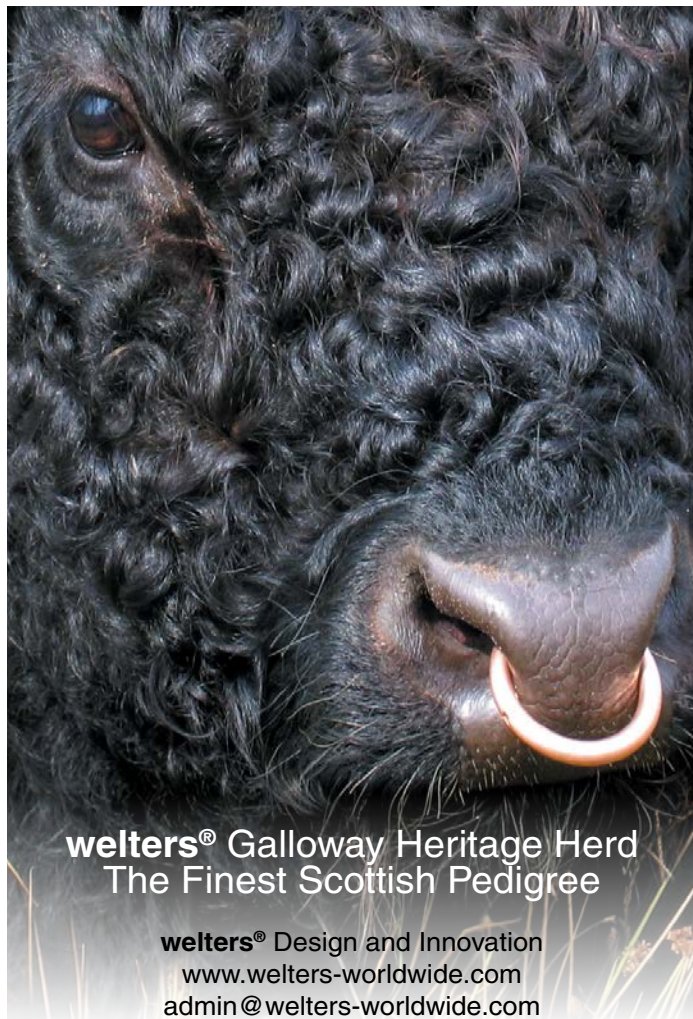
As part of their land management biodiversity and specie protection and enhancement programmes, **welters®** own two herds of Galloway cattle registered at Whithaugh; the traditional black breed and the less common white variety.

The Galloway is one of the oldest and purest of our native cattle breeds and they are famed for their hardiness and ability to live off the poorest of land and popularity is growing due to the increased interest in British Native breeds and environmental issues.

welters® are long standing members of the Galloway Cattle Society of Great Britain and Ireland.







welters® Galloway Heritage Herd
The Finest Scottish Pedigree

welters® Design and Innovation
www.welters-worldwide.com
admin@welters-worldwide.com



The Heritage Herd
White Galloways

welters®
ORGANISATION
WORLDWIDE

+44 (0) 1387 375220

+44 (0) 7710 109 457

www.welters-worldwide.com

admin@welters-worldwide.com

Whithaugh



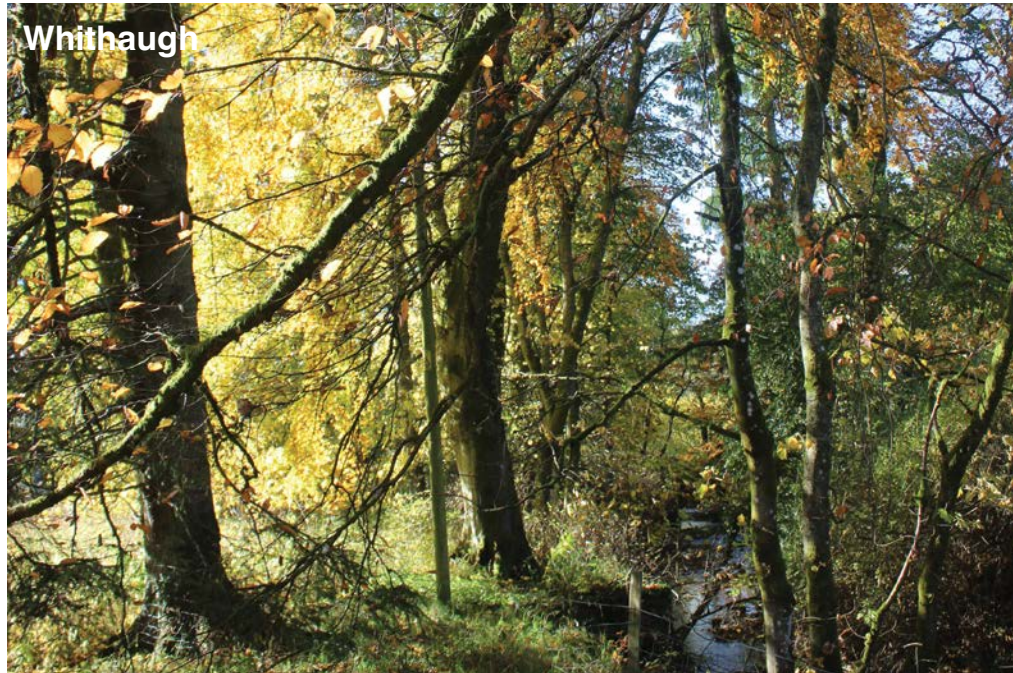
welters®

ORGANISATION
WORLDWIDE
Design and Innovation

Nature and Technology

Nestled within the Scottish Borders sits **welters®** Whithaugh House. The house itself is steeped in history and is surrounded by a landscape rich in biodiversity. It is this setting that forms the inspiration for the company's ethos of Nature and Technology which drives the creative and innovative development so prolific within the organisation today.







welters[®]

ORGANISATION
WORLDWIDE
Design and Innovation

Bereavement Services

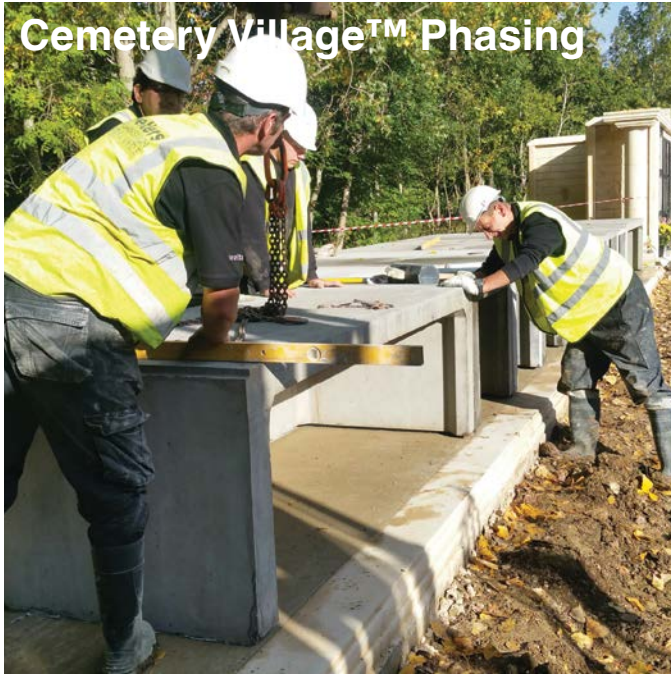


An important arm of the welters organisation is their memorial and interment facilities management service to the Bereavement Industry.

The company provides cemetery improvement schemes with products and systems designed and manufactured in house serving a network of Burial Authorities nationwide.



Cemetery Village™ Phasing



The fifth phase of installations are underway, providing further interment availability for cemetery users following successful sales of burial chambers and mausolea within the previous phases at the site. This is part of an overall 5 year contract.

This new phase of the Cemetery Village™ Scheme includes, front and side charging mausolea and interment chambers which in combination creates a substantial and unique development within the cemetery.



Interment Support Services

welters® provide a nationwide 24/7 interment support for all their interment facilities.





Majestic Memorial Mausolea

Following its introduction in 2013 the Majestic Memorial is now established in an growing number of crematoria grounds providing a superior option for the above ground interment of cremated remains.

A new spacer and planting frame configuration has been design and added to the system options. It allows the customer to install the memorials neatly in rows and gives the opportunity for planting to the front of the memorial.

welters® have also been offering these memorials on a 'pay as you go' option which allows the customer to make payment once the memorial has been sold. This has proven popular with existing and new customers alike.



Stone Memorial Orbs

Following **welters®** successful exclusive partnership proposal for the provision of interment and memorial options set within a uniquely designed landscape for a newly opened crematorium, the first phases have been established and the sales flow is ongoing.

The main installations comprised of Stone and Woodland Memorial Orbs providing up to four interment spaces for cremated remains.

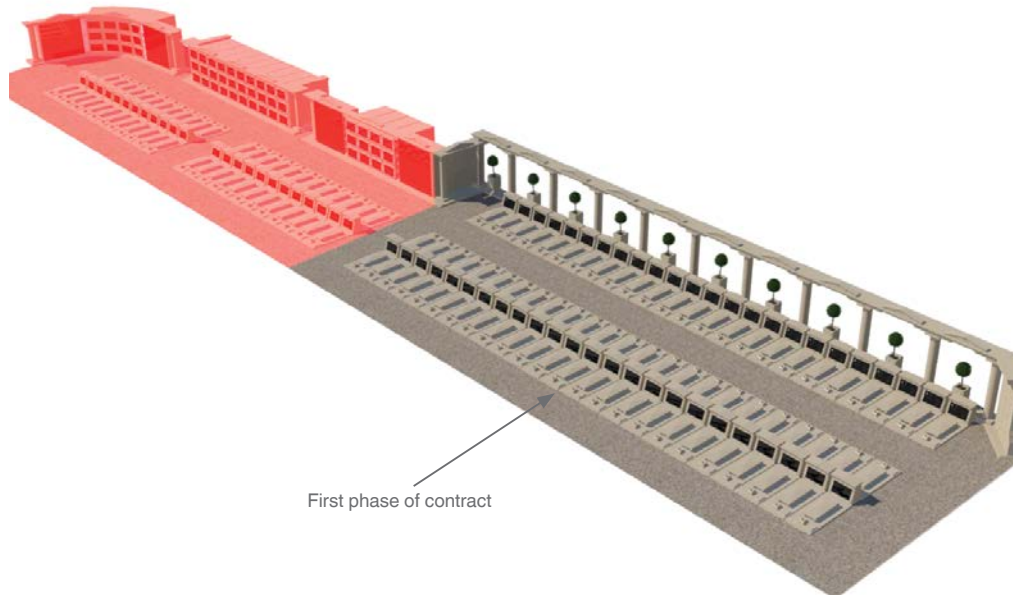
Additional memorial provision has also been included in the forms of memorial 'totem poles', memorial benches and stainless steel embellishments.



Woodland Memorial Orbs



Major contract award



First phase of contract

Following the success of a pilot scheme initiated through a partnership programme between WOW and the Local Authority, the company have now been awarded a major contract to provide burial chamber and mausoleum provision across the service for the next four years.

The first phase has already been proposed and includes additional decorative elements outwith the tender specification.

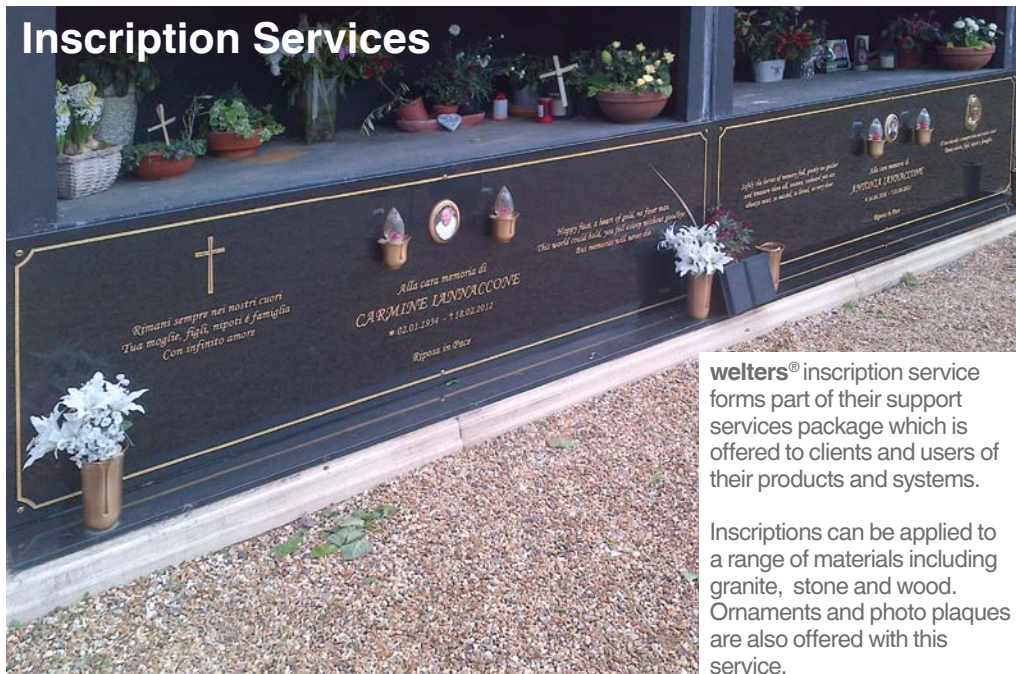




In addition to their inscription service **welters®** also manufacture marker stakes which can be inscribed as a memorial or identification marker to a section or area within the cemetery/park.

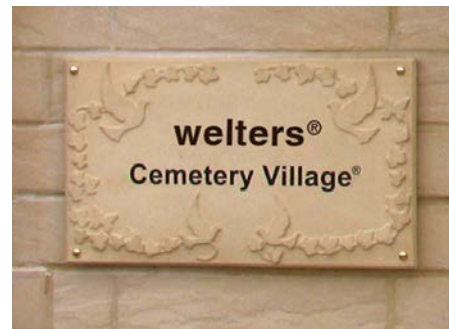


Inscription Services



welters® inscription service forms part of their support services package which is offered to clients and users of their products and systems.

Inscriptions can be applied to a range of materials including granite, stone and wood. Ornaments and photo plaques are also offered with this service.





Manufacturing

Based just outside Carlisle near the M6 corridor, **welters®** manufacturing facility is well positioned to serve the UK with an ever growing range of products, from large items such as burial chambers and mausolea cells to the more decorative products and architectural features.

New products are continually being developed and produced.



Manufacturing



welters[®]
ORGANISATION
WORLDWIDE
Design and Innovation

PO Box 159, Carlisle,
Great Britain, CA2 5BG
Tel: 08702 416 422
Fax: 01228 674 959
www.welters-worldwide.com
admin@welters-worldwide.com